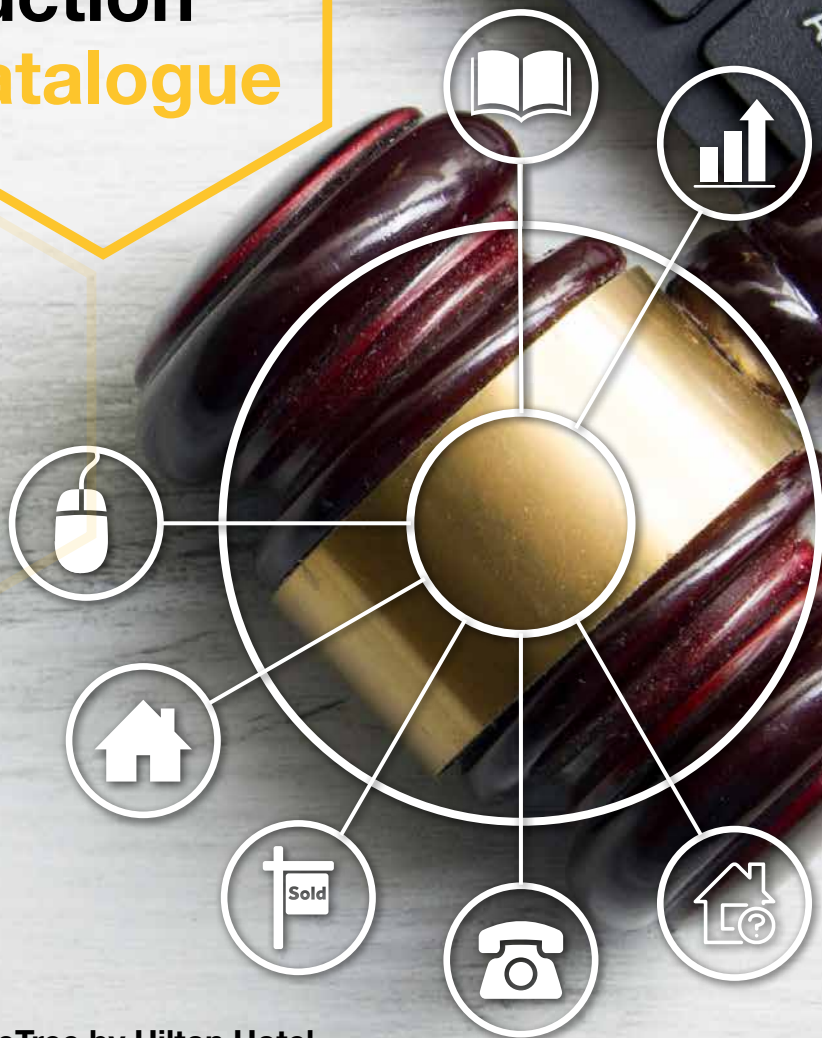


# Property auction catalogue



**DoubleTree by Hilton Hotel  
Festival Park, Stoke-on-Trent  
Staffordshire, ST1 5BQ**

**Monday 11th September, 2023  
6.30pm start**

# Property auctions dates

**DoubleTree by Hilton Hotel,  
Stoke-on-Trent, ST1 5BQ**

<b>2023 Auction Date</b>	<b>Closing Date For Entries</b>
<b>16th October</b>	<b>08th September</b>
<b>20th November</b>	<b>13th October</b>

## Freehold & Leasehold Lots offered in conjunction with...

**Anthony Collins**  
solicitors

**DL**  
DUNDAS LAW  
RESIDENTIAL CONVEYANCING

Susan  
Howarth  
& company  
SOLICITORS

**SALMONS**  
solicitors

SOLICITORS  
**RJS**

**poole alcock**  
SOLICITORS

**HALL  
SMITH  
WHITTINGHAM** LLP  
SOLICITORS &  
HIGHER COURT ADVOCATES

**moss haselhurst**  
solicitors

**sas daniels** LLP  
No ordinary law firm.

**Hibberts** LLP  
Solicitors

**tinsdillsolicitors**

**aspire**  
housing

**GODDARD DUNBAR**  
& ASSOCIATES LTD

**CLOWES & CO.**  
SOLICITORS

**WALTERS  
& PLASKITT**  
SOLICITORS

# The region's number 1 property auctioneer butters john bee <sup>bjb</sup>

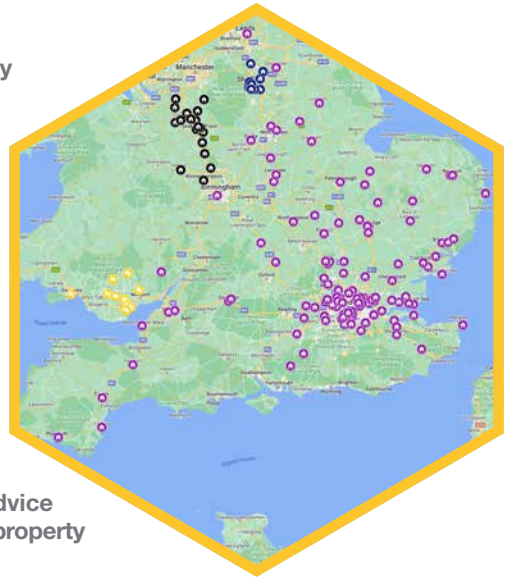


Leanne Roberts,  
Auction Administrator  
& John Hand,  
Auction Manager

## Traditional Auctioneers with over 150 years' experience of selling Residential & Commercial property and Land.

Auction is the quickest and easiest way to buy and sell property in today's modern property market, the increasing popularity of online bidding means you can buy and sell with us anywhere nationwide. Throughout 2022 our sales have gone from strength to strength and we continue to push the boundary further working with **Darlows**, **Haybrook** and **haart** part of our wider group, meaning greater nationwide cover.

Whether buying or selling you're in safe hands, our award winning Auction Dept. is backed by a network of Residential offices, Area Partners, and dedicated Commercial and Land & New Homes teams, so you can be sure you are getting the best specialist advice and expert local knowledge from one of our property professionals based in the area.



**One Stop Lot Shop - Butters John Bee** introduce to **Just Mortgages** for your mortgage and protection requirements. Just Mortgages is a trading name of Just Mortgages Direct Limited which is an appointed representative of The Openwork Partnership, a trading style of Openwork Limited which is authorised and regulated by the Financial Conduct Authority. Just Mortgages Direct Limited Registered Office: Colwyn House, Sheepen Place, Colchester, Essex, C03 3LD. Registered in England No. 2412345.

**YOUR PROPERTY MAY BE REPOSSESSED IF YOU DO NOT KEEP UP REPAYMENTS ON YOUR MORTGAGE.**

Valuation can help you with your survey needs nationwide, and we can recommend a good local Conveyancer, we also have Residential and Commercial Lettings agencies.

**Any queries about buying or selling at auction then contact the team on 0800 090 2200, or email [auction@bjbmail.com](mailto:auction@bjbmail.com), and we will be happy to help.**

# Proof of identity and address

All prospective bidders must register and provide proof of identity and address to the Auctioneers prior to the start of the sale.

**Original documents MUST be provided.**

**Photocopies are NOT acceptable.**

You will need to register before the auction starts if you are intending to bid, as we are required to verify anyone who offers, bids, or buys at butters john bee auctions.

**In each case, for proof of ID we will need one item from List A, (if you cannot produce any of the items on list A, then you must produce two of the items on list B). For proof of address one item from List C (If an item is used from List B for the purposes of identity, the same item may NOT be used for the purposes of proof of address) Failure to produce the correct ID will mean you will NOT be eligible to bid on the night.**

There are a few options available to you:

- Go to any of our 17 branches, or head office, with your original paperwork, we will then verify for you free of charge
- The Post Office can verify up to three forms of identification, there is however a charge for this service
- A professional body (solicitor, accountant etc.) can also certify your ID and directly send it on your behalf to [auctions@bjbmail.com](mailto:auctions@bjbmail.com) (please note these parties may make a charge directly to you)
- You can bring the relevant documents to the auction venue between 5.00pm and 6.30pm to register free of charge

If you intend to bid via the Internet, Telephone or Proxy, we will require this information prior to the day of the auction. If we do not receive certified identification, we will be unable to bid on your behalf.

If you are bidding on behalf of a company, you will also need to show a copy of the Certificate of Incorporation, a list of directors and a letter of authority on Company letterhead, signed by a company director, prior to signing the contract.

## List A – proof of ID

- Current valid (signed) full UK Passport.
- Current valid (signed) overseas Passport.
- Current UK Photocard Driving Licence (provisional acceptable).
- Current EU Photocard Driving Licence.
- Current valid EEA Member State ID card.
- Current biometric residence permit issued by UK Border Agency.
- Current Firearms/Shotgun Certificate.

### List B – proof of ID

- Bank, Building Society or Credit Union Statement dated within the last 3 months (not printed off the internet).
- Benefits or pensions notification letter confirming the right to benefit.
- Blue disabled drivers pass.
- Current UK paper driving licence.
- Local authority tax bill/council tax bill (we can only accept bills dated until the end of June of the year the client contract is signed).
- Medical Card/Certificate.
- National Insurance Card.
- UK Birth Certificate.
- Utility Bill/Utility Statement or Certificate/Letter from a supplier of utilities dated within the last 3 months.

### List C – proof of address

- Bank Statement (dated in the last three months) - may be an e-copy
- Credit Card Statement (dated in the last three months) - may be an e-copy
- Council Tax bill (we can only accept bills dated until the end of June of the year the client contract is signed)
- Current mortgage statement (correspondence address and address the mortgage applies to must be the same)
- Current TV licence
- Driving licence showing current address (paper OR card version) (provisional acceptable) (not acceptable if used as ID)
- Homeowner's current home insurance policy schedule
- Home service provider bill, such as broadband or digital TV dated within the last three months
- Letter from the employer on company headed paper, signed and dated within the last three months (an email from a verified company email address is acceptable)
- Recent documentation confirming the applicant will be/is receiving local housing allowance or housing benefit
- Tenancy agreement signed and dated within the last six months (the customer being checked must be a named tenant on the tenancy agreement)
- Utility bill dated within the last three months
- Letter from the NHS writing to confirm the customer is living at the address
- Letter from bank to confirm the customer is living at the property - no other bank letter is acceptable

#### The following forms of proof of address are not acceptable:

1. HM Revenue & Customs documents
2. Letters from accountants or solicitors
3. Mobile phone bills
4. NHS medical card

# Property auction

## buyer's guide

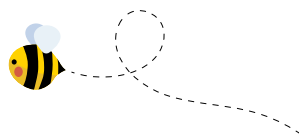
Buying at auction is becoming far more popular with the public, many of whom have never previously attended a property auction. We have drawn up some basic guidelines to ensure that clients maximise their opportunity to take advantage of such a wide variety of properties available at one venue.

- Think ahead, butters john bee hold regular auction sales with a catalogue printed some weeks in advance. Either buy a catalogue from one of our offices or download one FREE of charge from our website [buttersjohnbee.com](http://buttersjohnbee.com)
- Read the catalogue carefully. Each of our properties carries a brief description. Read our details thoroughly and identify the properties you are interested in.
- Take a look at the property you are interested in. Contact the office listed for viewing arrangements or see the relevant viewing schedule.
- Take legal advice. Purchasing a property at auction is a firm commitment that carries the same legal implications as a signed contract by private treaty. In most cases we have copies of legal documents in our possession, or your solicitor may wish to contact the vendor's solicitor, these legal packs can often be downloaded from our website.
- Read the general conditions of sale at the rear of the catalogue.
- Get a copy of the addendum. These are available online and contain any late amendments, information or alterations.
- Plan ahead if you require mortgage assistance. Note that prospective purchasers should have the necessary mortgage advice well in advance of future auctions.
- Leave time to get a valuation done if required. Your mortgage finance may be reliant upon the results, not to mention your peace of mind.
- Organise your deposit before the auction. We ask for 10% deposit (subject to a minimum of £1000) once the property is knocked down to you, payable on signing contracts on the day of the auction. Your bank or building society should be made aware of this. The balance of the monies will normally be due within 20 working days of the sale. In addition you have to pay to the auctioneer an administration fee of £1,000 plus VAT if you purchase at the auction, prior to the auction or post auction. Cheques made payable to butters john bee. Deposits must be paid by bankers draft, personal/business cheque or debit card.
- Make sure the Auctioneer has your bid, by clearly indicating with catalogue or hand.
- Ensure that you have registered with us before the auction starts, and supplied your two forms of identification. You can do this on the night of the auction, just arrive a bit early to give yourself enough time, or you can go into any of our 17 High Street branches prior to the sale and they will certify you ID free of charge. Original documents MUST be provided, photocopies are NOT acceptable. We will also accept certified ID sent direct from a solicitor or professional body.

- Check that the properties included in the catalogue will be offered on the day of the sale. Some may be withdrawn, and some may be sold prior to auction.
- Keep calm. Our Auctioneers understand the pressure that first time auction buyers can experience in the sale room, and will be as helpful as possible.
- Arrive in plenty of time. It is useful to get some knowledge of how sales are conducted by seeing other lots being sold.
- If the lot you're bidding for fails to make its reserve it may be that the vendor will decide to accept your bid later so make sure you leave your details with us.
- Be ready to sign immediately when the hammer falls. We shall have a copy of the contract available soon after the hammer falls.
- Be positive, with the right forward planning and research you will find an auction a speedy and simple way of buying a property.
- This catalogue contains details about properties being sold at auction. Those details are subject to change up to and including the day of the auction. Please check our website regularly at [butterjohnbee.com](http://butterjohnbee.com) and look out for any additional materials available on the day of the auction, in order to stay fully informed with the up to date information.
- **Guide Price:** An indication of the seller's current minimum acceptable price at auction. The guide price or range of guide prices is given to assist consumers in deciding whether or not to pursue a purchase. It is usual, but not always the case, that a provisional reserve range is agreed between the seller and the auctioneer at the start of marketing. As the reserve is not fixed at this stage and can be adjusted by the seller at any time up to the day of the auction in the light of interest shown during the marketing period, a guide price is issued. This guide price can be shown in the form of a minimum and maximum price range within which an acceptable sale price (reserve) would fall, or as a single price figure within 10% of which the minimum acceptable price (reserve) would fall. A guide price is different to a reserve price (see separate definition). Both the guide price and the reserve price can be subject to change up to and including the day of the auction.
- **Reserve Price:** the seller's minimum acceptable price at auction and the figure below which the auctioneer cannot sell. The reserve price is not disclosed and remains confidential between the seller and the auctioneer. Both the guide price and the reserve price can be subject to change up to and including the day of the auction.

## Join the **bjb** hive with our **FREE Lettings Switch Service**

Call Kyle mellor on **01782 211120** or  
e-mail **[kyleMellor@bjbmail.com](mailto:kyleMellor@bjbmail.com)** to find  
out more.



# Order of sale

(unless previously sold or withdrawn, please check the Addendum online for updates)

**DoubleTree by Hilton Hotel, Festival Park,  
Stoke-on-Trent, Staffordshire, ST1 5BQ**

**Monday 11th September 2023 at 6.30pm**

- 1 342 Leek Road, Hanley, Stoke-on-Trent, Staffordshire, ST1 3JL
- 2 13 Meir Street, Tunstall, Stoke-on-Trent, Staffordshire, ST6 6DD
- 3 50 Clare Avenue, Bradwell, Newcastle-under-Lyme, Staffordshire, ST5 8PX
- 4 54 Windsor Road, Stafford, Staffordshire, ST17 4PB
- 5 37 Springfield Road, Biddulph, Stoke-on-Trent, Staffordshire, ST8 7BY
- 6 2 Common Lane, Betley, Crewe, Cheshire, CW3 9AL
- 7 13 Vernon Close, Audley, Stoke-on-Trent, Staffordshire, ST7 8EL
- 8 35 Victoria Avenue, Kidsgrove, Stoke-on-Trent, Staffordshire, ST7 1HD
- 9 22 Meir View, Meir, Stoke-on-Trent, Staffordshire, ST3 6AH
- 10 99 Richmond Road, Crewe, Cheshire, CW1 4BA
- 11 Hough Chapel Cobbs Lane, Hough, Crewe, Cheshire, CW2 5JN
- 12 25 Broadhurst Street, Tunstall, Stoke-on-Trent, Staffordshire, ST6 1EX
- 13 Land at Knutton Lane, Knutton, Newcastle-under-Lyme, Staffordshire, ST5 6EU
- 14 Land at Vernon Avenue, Audley, Stoke-on-Trent, Staffordshire, ST7 8EF
- 15 33 Jan Palach Avenue, Nantwich, Cheshire, CW5 7DJ
- 16 4 Regent Street, Moulton, Northwich, Cheshire, CW9 8NY
- 17 60 Southfield, Sutton Hill, Telford, Shropshire, TF7 4HS
- 18 Land at Leicester Close, Clayton, Newcastle-under-Lyme, Staffordshire, ST5 3BP
- 19 26 Station Road, Scholar Green, Stoke-on-Trent, Staffordshire, ST7 3HJ
- 20 Flat 30 Upper Marshall Street, Birmingham, B1 1LA
- 21 Flat 248 Upper Marshall Street, Birmingham, B1 1LP
- 22 8 Trafalgar House, Cannock, West Mids, WS12 2GH
- 23 Builders Yard Ramsey Street, Fenton, Stoke-on-Trent, Staffordshire ST4 4JW
- 24 2 Church Road, Biddulph, Stoke-on-Trent, Staffordshire, ST8 6LY
- 25 34 James Reckitt Avenue, Kingston-upon-Hull, HU8 7TP
- 26 8 Walley Place, Cobridge, Stoke-on-Trent, Staffordshire, ST6 2BJ
- 27 79 Blurton Road, Blurton, Stoke-on-Trent, Staffordshire, ST3 2BS
- 28 68 Woodshutts Street, Talke, Stoke-on-Trent, Staffordshire, ST7 1LB
- 29 Land at Attwood Street, Kidsgrove, Stoke-on-Trent, Staffordshire, ST7 4BP
- 30 Land at Westfield Avenue, Audley, Stoke-on-Trent, Staffordshire, ST7 8EQ
- 31 Brookdale Uttoxeter Road, Blythe Bridge, Stoke-on-Trent, Staffordshire, ST11 9HQ
- 32 3 The Villas, Boothen, Stoke-on-Trent, Staffordshire, ST4 5AQ
- 33 Acton Bridge Nursery Acton Bridge, Northwich, Cheshire, CW8 3PZ
- 34 Land at Whitehill Road, Kidsgrove, Stoke-on-Trent, Staffordshire, ST7 4DT
- 35 Land at Moss Road, Cannock, West Mids, WS11 6DP
- 36 94 Trentham Road, Dresden, Stoke-on-Trent, Staffordshire ST3 4ED
- 37 Room 25/Unit 21, Q Studios North Street, Stoke, Stoke-on-Trent, Staffordshire, ST4 7FA





- 38 Room 26/Unit 22, Q Studios North Street, Stoke, Stoke-on-Trent, Staffordshire, ST4 7FA
- 39 Flat 34 Keele House The Midway, Newcastle-under-Lyme, Staffordshire, ST5 1LD
- 40 Flat 50 Keele House The Midway, Newcastle-under-Lyme, Staffordshire, ST5 1LD
- 41 83 Queensgate, Northwich, Cheshire, CW8 1DU
- 42 9 Lewin Street, Middlewich, Cheshire, CW10 9BG
- 43 Peace Cottage, 14 – 16 Bridge Street, Kenilworth, Warwickshire, CV8 1BP
- 44 Plot 1 Grange Road, Meir Heath Stoke-On-Trent, Staffordshire, ST3 7BH
- 45 Plot 2 Grange Road, Meir Heath Stoke-On-Trent, Staffordshire, ST3 7BH
- 46 4 to 6 Market Street, Longton, Stoke-on-Trent, Staffordshire ST3 1BX
- 47 84 Hawkesford Crescent, Wolverhampton, West Mids, WV10 9SQ
- 48 571 West Street, Crewe, Cheshire, CW2 8SH
- 49 37 St Lukes Street, Hanley, Stoke-on-Trent, Staffordshire, ST1 3PZ
- 50 31 Henry Street, Sandyford, Stoke-on-Trent, Staffordshire, ST6 5HP
- 51 11 Galleys Bank, Kidsgrove, Stoke-on-Trent, Staffordshire, ST7 4DD
- 52 Land at Sycamore Avenue, Crewe, Cheshire, CW1 4DT
- 53 Land & Premises at Sneyd Street, Hanley, Stoke-on-Trent, Staffordshire, ST6 2NP
- 54 1 Edison Street, Fenton, Stoke-on-Trent, Staffordshire, ST4 4NL
- 55 52 Station Road, Lostock Gralam, Northwich, Cheshire, CW9 7PS
- 56 34 High Street, Arnold, Nottingham, NG5 7DZ
- 57 Apartment 327 Citispace South 11 Regent Street, Leeds, LS2 7JQ
- 58 20 Market Street, Longton, Stoke-on-Trent, Staffordshire ST3 1BX
- 59 23 Cemetery Road, Salford, Manchester, M5 5WG
- 60 358 Hungerford Road, Crewe, Cheshire, CW1 6HD
- 61 29 Ashburton Street, Cobridge, Stoke-on-Trent, Staffordshire, ST6 2BX
- 62 Land at Jasmine Crescent, Newchapel, Stoke-on-Trent, Staffordshire, ST7 4GZ
- 63 Land at Camillus Road, Knutton, Newcastle-under-Lyme, Staffordshire, ST5 6DY
- 64 9 South Street, Ball Green, Stoke-on-Trent, Staffordshire, ST6 8AX
- 65 12 Stafford Street, Stone, Staffordshire ST15 8QW
- 66 Land at New Hall Street, Hanley, Stoke-on-Trent, ST1 5HQ
- 67 39 Nantwich Road, Middlewich, Cheshire, CW10 9HD
- 68 376-378 Ruxley Road, Bucknall, Stoke-on-Trent, Staffordshire, ST2 9BA
- 69 17 Grays Close, Scholar Green, Stoke-on-Trent, Staffordshire, ST7 3LU
- 70 261 High Street, Tunstall, Stoke-on-Trent, Staffordshire ST6 5EG
- 71 Land at Russell Road, Winsford, Cheshire, CW7 1EP
- 72 Middle Cottage Crackley Gates, Newcastle-under-Lyme, Staffordshire, ST5 6AW
- 73 80 Southgate, Sutton Hill, Telford, Shropshire, TF7 4HF
- 74 69 Nash Peake Street, Tunstall, Stoke-on-Trent, Staffordshire, ST6 5BS
- 75 198 West Street, Crewe, Cheshire, CW1 3HN
- 76 129 High Street, Silverdale, Newcastle-under-Lyme, Staffordshire, ST5 6LR
- 77 5 & 5a Queen Street, Kidsgrove, Stoke-on-Trent, Staffordshire, ST7 4AH
- 78 34 Lower Mayer Street, Hanley, Stoke-on-Trent, Staffordshire, ST1 2EA
- 79 4 Everest Road, Kidsgrove, Stoke-on-Trent, Staffordshire, ST7 4DW
- 80 46 Alton Street, Crewe, Cheshire, CW2 7QF
- 81 11 Summerbank Road, Sandyford, Stoke-on-Trent, Staffordshire, ST6 5EY

# Order of sale (in alphabetical order)

(unless previously sold or withdrawn, please check the Addendum online for updates)

**DoubleTree by Hilton Hotel, Festival Park,  
Stoke-on-Trent, Staffordshire, ST1 5BQ**

**Monday 11th September 2023 at 6.30pm**

- 33 Acton Bridge Nursery Acton Bridge, Northwich, Cheshire, CW8 3PZ
- 80 46 Alton Street, Crewe, Cheshire, CW2 7QF
- 61 29 Ashburton Street, Cobridge, Stoke-on-Trent, Staffordshire, ST6 2BX
- 29 Land at Attwood Street, Kidsgrove, Stoke-on-Trent, Staffordshire, ST7 4BP
- 27 79 Blurton Road, Blurton, Stoke-on-Trent, Staffordshire, ST3 2BS
- 43 Peace Cottage, 14 – 16 Bridge Street, Kenilworth, Warwickshire, CV8 1BP
- 12 25 Broadhurst Street, Tunstall, Stoke-on-Trent, Staffordshire, ST6 1EX
- 63 Land at Camillus Road, Knutton, Newcastle-under-Lyme, Staffordshire, ST5 6DY
- 59 23 Cemetery Road, Salford, Manchester, M5 5WG
- 24 2 Church Road, Biddulph, Stoke-on-Trent, Staffordshire, ST8 6LY
- 3 50 Clare Avenue, Bradwell, Newcastle-under-Lyme, Staffordshire, ST5 8PX
- 11 Hough Chapel Cobbs Lane, Hough, Crewe, Cheshire, CW2 5JN
- 6 2 Common Lane, Betley, Crewe, Cheshire, CW3 9AL
- 72 Middle Cottage Crackley Gates, Newcastle-under-Lyme, Staffordshire, ST5 6AW
- 54 1 Edison Street, Fenton, Stoke-on-Trent, Staffordshire, ST4 4NL
- 79 4 Everest Road, Kidsgrove, Stoke-on-Trent, Staffordshire, ST7 4DW
- 51 11 Galleys Bank, Kidsgrove, Stoke-on-Trent, Staffordshire, ST7 4DD
- 44 Plot 1 Grange Road, Meir Heath Stoke-On-Trent, Staffordshire, ST3 7BH
- 45 Plot 2 Grange Road, Meir Heath Stoke-On-Trent, Staffordshire, ST3 7BH
- 69 17 Grays Close, Scholar Green, Stoke-on-Trent, Staffordshire, ST7 3LU
- 47 84 Hawkesford Crescent, Wolverhampton, West Mids, WV10 9SQ
- 50 31 Henry Street, Sandyford, Stoke-on-Trent, Staffordshire, ST6 5HP
- 56 34 High Street, Arnold, Nottingham, NG5 7DZ
- 76 129 High Street, Silverdale, Newcastle-under-Lyme, Staffordshire, ST5 6LR
- 70 261 High Street, Tunstall, Stoke-on-Trent, Staffordshire ST6 5EG
- 60 358 Hungerford Road, Crewe, Cheshire, CW1 6HD
- 25 34 James Reckitt Avenue, Kingston-upon-Hull, HU8 7TP
- 15 33 Jan Palach Avenue, Nantwich, Cheshire, CW5 7DJ
- 62 Land at Jasmine Crescent, Newchapel, Stoke-on-Trent, Staffordshire, ST7 4GZ
- 13 Land at Knutton Lane, Knutton, Newcastle-under-Lyme, Staffordshire, ST5 6EU
- 1 342 Leek Road, Hanley, Stoke-on-Trent, Staffordshire, ST1 3JL
- 18 Land at Leicester Close, Clayton, Newcastle-under-Lyme, Staffordshire, ST5 3BP
- 42 9 Lewin Street, Middlewich, Cheshire, CW10 9BG
- 78 34 Lower Mayer Street, Hanley, Stoke-on-Trent, Staffordshire, ST1 2EA
- 46 4 to 6 Market Street, Longton, Stoke-on-Trent, Staffordshire ST3 1BX
- 58 20 Market Street, Longton, Stoke-on-Trent, Staffordshire ST3 1BX
- 2 13 Meir Street, Tunstall, Stoke-on-Trent, Staffordshire, ST6 6DD



- 9 22 Meir View, Meir, Stoke-on-Trent, Staffordshire, ST3 6AH
- 35 Land at Moss Road, Cannock, West Mids, WS11 6DP
- 67 39 Nantwich Road, Middlewich, Cheshire, CW10 9HD
- 74 69 Nash Peake Street, Tunstall, Stoke-on-Trent, Staffordshire, ST6 5BS
- 66 Land at New Hall Street, Hanley, Stoke-on-Trent, ST1 5HQ
- 37 Room 25/Unit 21, Q Studios North Street, Stoke, Stoke-on-Trent, Staffordshire, ST4 7FA
- 38 Room 26/Unit 22, Q Studios North Street, Stoke, Stoke-on-Trent, Staffordshire, ST4 7FA
- 77 5 & 5a Queen Street, Kidsgrove, Stoke-on-Trent, Staffordshire, ST7 4AH
- 41 83 Queensgate, Northwich, Cheshire, CW8 1DU
- 23 Builders Yard Ramsey Street, Fenton, Stoke-on-Trent, Staffordshire ST4 4JW
- 57 Apartment 327 Citispace South 11 Regent Street, Leeds, LS2 7JQ
- 16 4 Regent Street, Moulton, Northwich, Cheshire, CW9 8NY
- 10 99 Richmond Road, Crewe, Cheshire, CW1 4BA
- 71 Land at Russell Road, Winsford, Cheshire, CW7 1EP
- 68 376-378 Ruxley Road, Bucknall, Stoke-on-Trent, Staffordshire, ST2 9BA
- 53 Land & Premises at Sneyd Street, Hanley, Stoke-on-Trent, Staffordshire, ST6 2NP
- 64 9 South Street, Ball Green, Stoke-on-Trent, Staffordshire, ST6 8AX
- 17 60 Southfield, Sutton Hill, Telford, Shropshire, TF7 4HS
- 73 80 Southgate, Sutton Hill, Telford, Shropshire, TF7 4HF
- 5 37 Springfield Road, Biddulph, Stoke-on-Trent, Staffordshire, ST8 7BY
- 49 37 St Lukes Street, Hanley, Stoke-on-Trent, Staffordshire, ST1 3PZ
- 65 12 Stafford Street, Stone, Staffordshire ST15 8QW
- 55 52 Station Road, Lostock Gralam, Northwich, Cheshire, CW9 7PS
- 19 26 Station Road, Scholar Green, Stoke-on-Trent, Staffordshire, ST7 3HJ
- 81 11 Summerbank Road, Sandyford, Stoke-on-Trent, Staffordshire, ST6 5EY
- 52 Land at Sycamore Avenue, Crewe, Cheshire, CW1 4DT
- 39 Flat 34 Keele House The Midway, Newcastle-under-Lyme, Staffordshire, ST5 1LD
- 40 Flat 50 Keele House The Midway, Newcastle-under-Lyme, Staffordshire, ST5 1LD
- 32 3 The Villas, Boothen, Stoke-on-Trent, Staffordshire, ST4 5AQ
- 22 8 Trafalgar House, Cannock, West Mids, WS12 2GH
- 36 94 Trentham Road, Dresden, Stoke-on-Trent, Staffordshire ST3 4ED
- 20 Flat 30 Upper Marshall Street, Birmingham, B1 1LA
- 21 Flat 248 Upper Marshall Street, Birmingham, B1 1LP
- 31 Brookdale Uttoxeter Road, Blythe Bridge, Stoke-on-Trent, Staffordshire, ST11 9HQ
- 14 Land at Vernon Avenue, Audley, Stoke-on-Trent, Staffordshire, ST7 8EF
- 7 13 Vernon Close, Audley, Stoke-on-Trent, Staffordshire, ST7 8EL
- 8 35 Victoria Avenue, Kidsgrove, Stoke-on-Trent, Staffordshire, ST7 1HD
- 26 8 Walley Place, Cobridge, Stoke-on-Trent, Staffordshire, ST6 2BJ
- 75 198 West Street, Crewe, Cheshire, CW1 3HN
- 48 571 West Street, Crewe, Cheshire, CW2 8SH
- 30 Land at Westfield Avenue, Audley, Stoke-on-Trent, Staffordshire, ST7 8EQ
- 34 Land at Whitehill Road, Kidsgrove, Stoke-on-Trent, Staffordshire, ST7 4DT
- 4 54 Windsor Road, Stafford, Staffordshire, ST17 4PB
- 28 68 Woodshutts Street, Talke, Stoke-on-Trent, Staffordshire, ST7 1LB



# Proof of identity and address

**A buyer's administration fee of £1,000 plus VAT is applicable to all lots sold at, pre or post auction.**

All potential bidders will need to register prior to the auction, and provide proof of identity and address to enable you to bid at our sales. (See 'Proof of Identity' at front of the catalogue).

If the buyer's details are different from the successful bidder's, then the buyer will also be required to submit their details as above.

If the successful bidder is buying on behalf of a company we also require a letter from that company on their letterhead authorising the bidder to bid on their behalf, the bidder will still be required to produce their details as above.

**Every buyer will be photographed at the auction before the contract is signed.**

# Common-sense auction finance you can trust.

With over 15 years' experience in auction finance, we're trusted to support customers across dozens of property auctions every year, by delivering the finance they need in the right timescales.

Whether you're looking for an investment or to live in the property yourself, we can consider lending on a wide range of properties and for a variety of personal circumstances – including if you're self-employed or retired.

You'll speak directly with an experienced specialist who'll make straightforward decisions and be transparent about costs, so you can act with confidence.

**Bid with confidence on your next auction purchase.**



Talk to our  
dedicated team on  
**0161 933 7155.**

Any property used as a security, including your home, may be repossessed if you do not keep up repayments on your mortgage or any other debt secured on it.

Together is a trading style of each of the undernoted companies, which have their registered office address at Lake View, Lakeside, Cheadle, Cheshire SK8 3GW.

Together Personal Finance Limited is authorised and regulated by the Financial Conduct Authority (FCA) | Registered in England and Wales - Company Registration Number 02613335. FCA number is 305253.

Together Commercial Finance Limited | Registered in England and Wales - Company Registration Number 02058813





# Bid live online!

All our sales are broadcast live in conjunction with Essential Information Group.

## What does the service cost?

Nothing! It's free, you pay the same as any buyer who attends the auction.

## Can I just watch?

Yes, many people use the service just to watch the auction.

## How does the bidding work?

You are in complete control. The dashboard will show you the current highest bid, and the amount the Auctioneer is looking for for the next bid, if you want to offer that amount simply hit the Bid button. When the hammer goes down the system will show if yours was the winning bid.

## Can I bid on more than one property?

Yes of course, you just need to let us know when you register what Lots you are interested in so we can approve you to bid.

## How does the auctioneer know I'm bidding?

The auctioneer has a monitor next to the rostrum that shows him your bid, and he can talk to you via the camera. Don't worry, you can see him but he can't see you!

## What about the deposit?

If you are the successful bidder, please be ready for us to call once the hammer goes down to process a card payment for the 10% Deposit and the Buyers Administration fee.

Email [auction@bjbmail.com](mailto:auction@bjbmail.com) for your registration form.

\*Guide price **£25,000 plus**

LOT  
**01**



## 342 Leek Road, Hanley, Stoke-on-Trent, Staffordshire, ST1 3JL

Scan or  
Click for  
further  
information  
about this  
property



- Mid-terrace house
- Two bedrooms
- In need of modernisation
- Near Staffordshire University
- Freehold
- Potential yield approx. 15% p/a
- Council Tax Band - A
- EPC - E

### Legal Representative

**Sara Pickerin**

Tinsdills Solicitors

T 01538 399332

E sara.pickerin@tinsdills.co.uk

### To apply contact:

**Hanley bjb**

T 01782 202600

E hanley@bjbmail.com

\*Guide price **£46,000 plus**

LOT  
**02**



## 13 Meir Street, Tunstall, Stoke-on-Trent, Staffordshire, ST6 6DD

Scan or  
Click for  
further  
information  
about this  
property



- Mid-terrace house
- Two bedrooms
- Currently tenanted @ £4,152 p/a
- Walking distance to local amenities
- Freehold
- Potential yield approx. 9% p/a
- Council Tax Band - A
- EPC - D

### Legal Representative

**Tracy Willcocks**

Goddard Dunbar

T 01782 284 320

E [tracy@goddarddunbar.co.uk](mailto:tracy@goddarddunbar.co.uk)

### To apply contact:

**Hanley bjb**

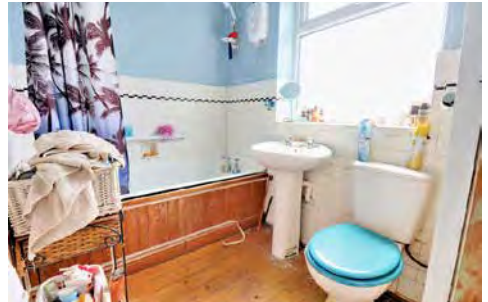
T 01782 202600

E [hanley@bjbmail.com](mailto:hanley@bjbmail.com)



\*Guide price **£130,000 plus**

LOT  
**03**



## 50 Clare Avenue, Bradwell, Newcastle-under-Lyme, Staffordshire, ST5 8PX

Scan or  
Click for  
further  
information  
about this  
property



- Semi-detached house
- Three bedrooms
- In need of modernisation
- Driveway & gardens
- Freehold
- Potential yield approx. 8% p/a
- Council Tax Band - B
- EPC - E

**Legal Representative**

**Nick Mason**

**Salmons Solicitors**

**T 01782 621266**

**E [nick.mason@salmonssolicitors.net](mailto:nick.mason@salmonssolicitors.net)**

**To apply contact:**

**Newcastle bjb**

**T 01782 6220155**

**E [newcastle@bjbmail.com](mailto:newcastle@bjbmail.com)**

\*Guide price **£175,000 plus**

LOT  
**04**



## 54 Windsor Road, Stafford, Staffordshire, ST17 4PB

Scan or  
Click for  
further  
information  
about this  
property



- Semi-Detached house
- Three bedrooms
- Renovation Project
- Vacant
- Freehold
- Potential yield approx. 7% p/a
- Council Tax Band - C
- EPC - TBC

### Legal Representative

**Henry Hutsby**

Hutsby Mees Solicitors

T 01785 259211

E [secretary@hutsbymeas.co.uk](mailto:secretary@hutsbymeas.co.uk)

### To apply contact:

**Stafford bjb**

T 01785 246000

E [stafford@bjbmail.com](mailto:stafford@bjbmail.com)

\*Guide price **£85,000 plus**

LOT  
**05**



It is suggested that potential purchaser's make their own enquiries of mortgage lenders as to whether the property is mortgageable prior to making a bid at auction.

## **37 Springfield Road, Biddulph, Stoke-on-Trent, Staffordshire, ST8 7BY**

Scan or  
Click for  
further  
information  
about this  
property



- **Semi-detached house**
- **Three bedrooms**
- **In need of modernisation**
- **Off road parking & gardens**
- **Freehold**
- **Potential yield approx. 9% p/a**
- **Council Tax Band – A**
- **EPC - C**

**Legal Representative**  
**TBC**

**To apply contact:**  
**Congleton bjb**  
**T 01260 280000**  
**E congleton@bjbmail.com**

# Alderwood Gardens

Aston



**Brand New 3 and 4 Bedroom Homes.**

Sales Centre now open on site! Thursday-Monday 10am-5pm.



An exclusive development  
of family homes in a  
traditional village setting.

 **Edgefold**  
Homes [edgefoldhomes.co.uk](http://edgefoldhomes.co.uk)

Contact

 01270 623444

 [Nantwich@bjbmail.com](mailto:Nantwich@bjbmail.com)  
for more information.

**butters john bee** <sup>bjb</sup>  
land & new homes

\*Guide price **£30,000 plus**

LOT  
**06**



## 2 Common Lane, Betley, Crewe, Cheshire, CW3 9AL

Scan or  
Click for  
further  
information  
about this  
property



- Single storey retail unit
- 189 sq ft (17.47 sq m)
- Former Hair Salon/Barbers
- In need of modernisation
- Within the village of Betley
- Freehold
- Rateable Value - £1,950 p/a
- EPC – D (83)

### Legal Representative

**Tom Jones**

Hibberts

T 01270 624225

E [tj2@hibberts.com](mailto:tj2@hibberts.com)

### To apply contact:

**Commercial bjb**

T 01782 212201

E [commercial@bjbmail.com](mailto:commercial@bjbmail.com)

\*Guide price **£69,000 plus**

LOT  
**07**



The seller is a registered social landlord and is therefore prohibited from selling a property to anyone who is an employee or director of the seller, or was in the last 12 months an employee or director, or is a close relative of such a person or an agent on their behalf.

It is our understanding that this property is considered to be of a non-traditional construction and we therefore suggest that interested parties make enquiries of mortgage lenders as to whether the property is considered suitable for mortgage purposes.

## **13 Vernon Close, Audley, Stoke-on-Trent, Staffordshire, ST7 8EL**

Scan or  
Click for  
further  
information  
about this  
property



- Semi-detached house
- Three bedrooms
- In need of modernisation
- Gardens front & rear
- Freehold
- Potential yield approx. 16% p/a
- Council Tax Band - A
- EPC - D

### **Legal Representative**

**Faye Eden**

**Anthony Collins Solicitors**

**T 0161 4700321**

**E Faye.Eden@anthonycollins.com**

### **To apply contact:**

**Alsager bjb**

**T 01270 877778**

**E alsager@bjbmail.com**

\*Guide price **£78,000 plus**

LOT  
**08**



The seller is a registered social landlord and is therefore prohibited from selling a property to anyone who is an employee or director of the seller, or was in the last 12 months an employee or director, or is a close relative of such a person or an agent on their behalf.

It is our understanding that this property is considered to be of a non-traditional construction and we therefore suggest that interested parties make enquiries of mortgage lenders as to whether the property is considered suitable for mortgage purposes.

## **35 Victoria Avenue, Kidsgrove, Stoke-on-Trent, Staffordshire, ST7 1HD**

Scan or  
Click for  
further  
information  
about this  
property



- **Semi-detached house**
- **Three bedrooms**
- **In need of modernisation**
- **Freehold**
- **Potential yield approx. 13% p/a**
- **Council Tax Band - A**
- **EPC - D**

### **Legal Representative**

**Gagandeep Kaur**

**Anthony Collins Solicitors**

**T 0121 214 3608**

**E Gagandeep.Kaur@anthonicollins.com**

### **To apply contact:**

**Kidsgrove bjb**

**T 01782 784442**

**E kidsgrove@bjbmail.com**

\*Guide price **£59,000 plus**

LOT  
**09**



## 22 Meir View, Meir, Stoke-on-Trent, Staffordshire, ST3 6AH

Scan or  
Click for  
further  
information  
about this  
property



- Mid-terrace house
- Two bedrooms
- Currently tenanted @ £4,200 p/a
- Small rear garden
- Freehold
- Potential yield approx. 12% p/a
- Council Tax Band - A
- EPC - E

### Legal Representative

**Richard Scholes**

RJS Solicitors

T 01782 646320

E richard.scholes@rjssolicitors.com

### To apply contact:

**Longton bjb**

T 01782 594777

E longton@bjbmail.com



\*Guide price **£73,000 plus**

LOT  
**10**



## 99 Richmond Road, Crewe, Cheshire, CW1 4BA

Scan or  
Click for  
further  
information  
about this  
property



- Semi-detached house
- Three bedrooms
- In need of modernisation
- Driveway & garage
- Park Opposite
- Freehold
- Potential yield approx. 11% p/a
- Council Tax Band – B
- EPC - G

### Legal Representative

**Michael Wright**

Hall Smith Whittingham

T 01270 212000

E [mwright@hswsolicitors.co.uk](mailto:mwright@hswsolicitors.co.uk)

### To apply contact:

**Crewe bjb**

T 01270 213541

E [crewe@bjbmail.com](mailto:crewe@bjbmail.com)

\*Guide price **£40,000 plus**

LOT  
**11**



## Hough Chapel, Cobbs Lane, Hough, Crewe, Cheshire, CW2 5JN

Scan or  
Click for  
further  
information  
about this  
property



- Former Methodist chapel
- 718 sq.ft (66.68 sq.m)
- Within the Village of Hough
- Good links to Crewe Town Centre
- Good links to M6 Motorway
- Freehold
- Council Tax Band - TBC
- EPC – N/A

### Legal Representative

**Joanne Russell**

Sintons Solicitors

T 0191 226 7841

E [joanne.russell@sintons.co.uk](mailto:joanne.russell@sintons.co.uk)

### To apply contact:

**Commercial bjb**

T 01782 212201

E [commercial@bjbmail.com](mailto:commercial@bjbmail.com)

\*Guide price **£64,000 plus**

LOT  
**12**



## 25 Broadhurst Street, Tunstall, Stoke-on-Trent, Staffordshire, ST6 1EX

Scan or  
Click for  
further  
information  
about this  
property



- Mid-terrace house
- Three bedrooms
- Currently tenanted @ £5,100 p/a
- Courtyard to the rear
- Freehold
- Potential yield approx. 8% p/a
- Council Tax Band - A
- EPC - D

### Legal Representative

**Nick Mason**

Salmons Solicitors

T 01782 621266

E [nick.mason@salmonssolicitors.net](mailto:nick.mason@salmonssolicitors.net)

### To apply contact:

**Hanley bjb**

T 01782 202600

E [hanley@bjbmail.com](mailto:hanley@bjbmail.com)

**butters  
john bee**  
**Investor Club  
Membership**

## What we offer:

- ◆ Regular market and legislation updates via our Newsletters and information bulletins
- ◆ Details of new build developments including leaseback and off plan opportunities via our Land and New Homes department
- ◆ Exclusive invitations to pre-launches and open days
- ◆ Details of potential investment properties via our network of over 200 branches
- ◆ Details of properties that our current landlords are selling with tenancies in place (including whole portfolio sales). These will be sent to our Investor Club prior to going on the open market.
- ◆ Expected rental prices and yields on all property details sent via the Investor Club

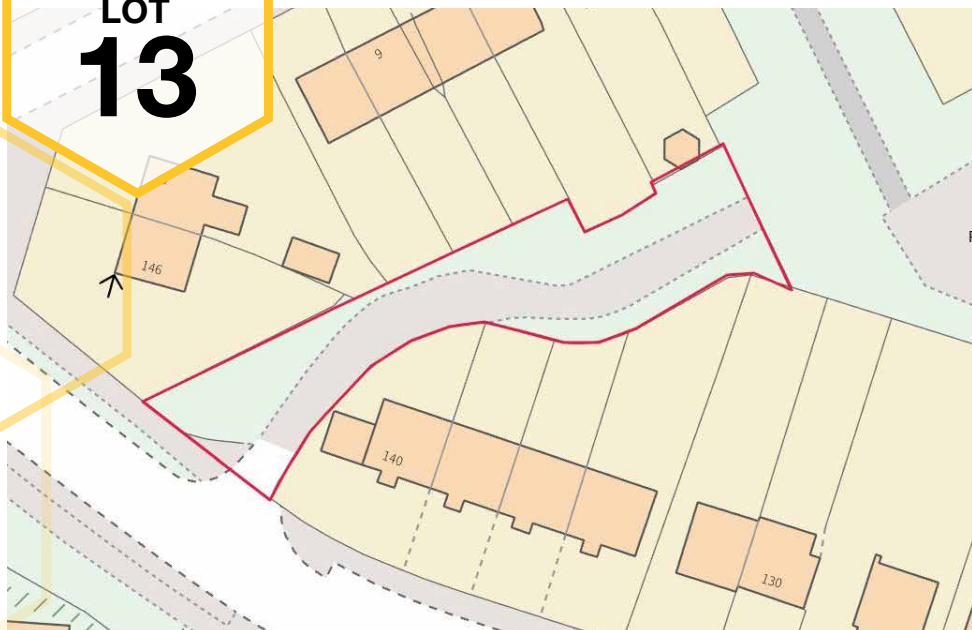


Contact **Kate Hurles**  
Head of Landlord Investment  
T 07960 120267  
E [investorserviceteam@spicerhaart.co.uk](mailto:investorserviceteam@spicerhaart.co.uk)

**butters john bee**<sup>bjb</sup>  
INVESTOR CLUB

**\*Declared Reserve £15,000 plus**

LOT  
**13**



The seller is a registered social landlord and is therefore prohibited from selling a property to anyone who is an employee or director of the seller, or was in the last 12 months an employee or director, or is a close relative of such a person or an agent on their behalf.

## Land at Knutton Lane, Knutton, Newcastle-under-Lyme, Staffordshire, ST5 6EU

- Vacant land
- Area: 0.17 Acre (687 m<sup>2</sup>)
- Former domestic garages site
- Well-established residential area
- Potential for alternative uses STPP
- Freehold
- EPC – N/A

Scan or  
Click for  
further  
information  
about this  
property



### Legal Representative

**Meera Singadia**

**Anthony Collins**

**T 0161 470 0321**

**E meera.singadia@anthonycollins.com**

### To apply contact:

**Land & New Homes bjb**

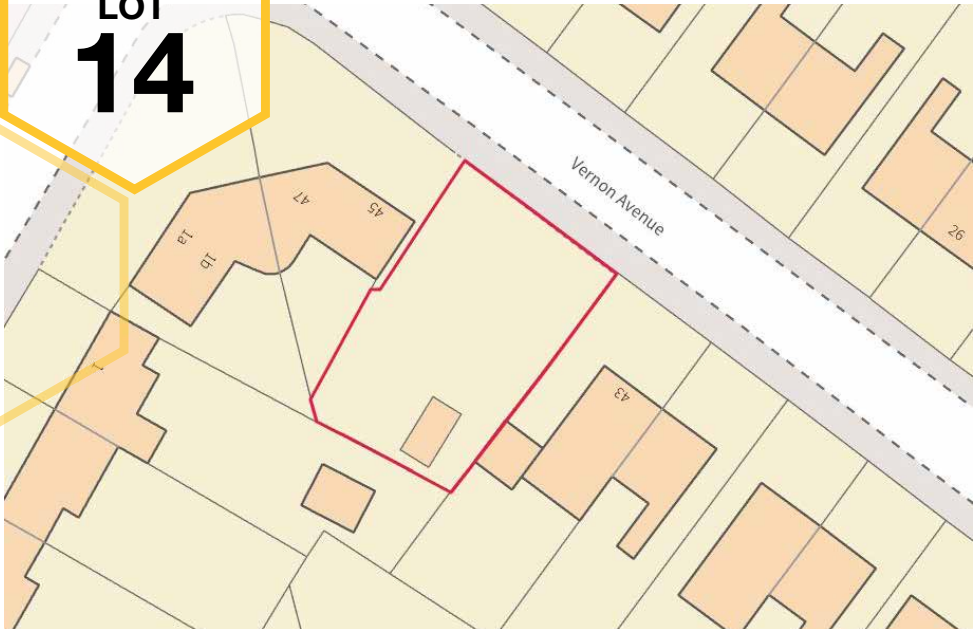
**T 01782 211147**

**E residential-land@bjbmail.com**



**\*Declared Reserve £20,000 plus**

**LOT  
14**



The seller is a registered social landlord and is therefore prohibited from selling a property to anyone who is an employee or director of the seller, or was in the last 12 months an employee or director, or is a close relative of such a person or an agent on their behalf.

## **Land at, Vernon Avenue, Audley, Stoke-on-Trent, Staffordshire, ST7 8EF**

Scan or  
Click for  
further  
information  
about this  
property



- Land comprising 1 domestic garage
- Area: 0.08 Acre (323 m<sup>2</sup>)
- Well-established residential area
- Potential for alternative uses STPP
- Freehold
- EPC – N/A

### **Legal Representative**

**Meera Singadia**

**Anthony Collins**

**T 0161 470 0321**

**E meera.singadia@anthonycollins.com.**

### **To apply contact:**

**Land & New Homes bjb**

**T 01782 211147**

**E residential-land@bjbmail.com**



\*Guide price **£240,000 plus**

LOT  
**15**



## 33 Jan Palach Avenue, Nantwich, Cheshire, CW5 7DJ

Scan or  
Click for  
further  
information  
about this  
property



- Detached true bungalow
- Three bedrooms
- Requires some updating
- Garage & driveway
- Sought after location
- Freehold
- Potential yield approx. 6% p/a
- Council Tax Band - D
- EPC - D

### Legal Representative

**James Williams**

Poole Alcock

T 01270 625478

E james.williams@poolealcock.co.uk

### To apply contact:

**Nantwich bjb**

T 01270 623444

E nantwich@bjbmail.com

\*Guide price **£100,000 plus**

LOT  
**16**



## 4 Regent Street, Moulton, Northwich, Cheshire, CW9 8NY

Scan or  
Click for  
further  
information  
about this  
property



- Mid-terrace house
- Two bedrooms
- Loft room
- Courtyard to the rear
- Freehold
- Potential yield approx. 9%
- Council Tax Band – A
- EPC - D

### Legal Representative

**Stephen Sowah**

Moss Haselhurst

T 01606 74301

E [Stephen.sowah@mosshaselhurst.co.uk](mailto:Stephen.sowah@mosshaselhurst.co.uk)

### To apply contact:

**Northwich bjb**

T 01606 352888

E [northwich@bjbmail.com](mailto:northwich@bjbmail.com)



\*Guide price **£86,500 plus**

LOT  
**17**



## 60 Southfield, Sutton Hill, Telford, Shropshire, TF7 4HS

Scan or  
Click for  
further  
information  
about this  
property



- Mid-Terraced House
- Three bedrooms
- Currently tenanted @ £8,100 p/a
- Freehold
- Potential yield approx. 10% p/a
- Council Tax Band – A
- EPC - D

### Legal Representative

**Conveyancing**

G2M Legal

T 0800 496020

E [legal@g2mgroup.co.uk](mailto:legal@g2mgroup.co.uk)

### To apply contact:

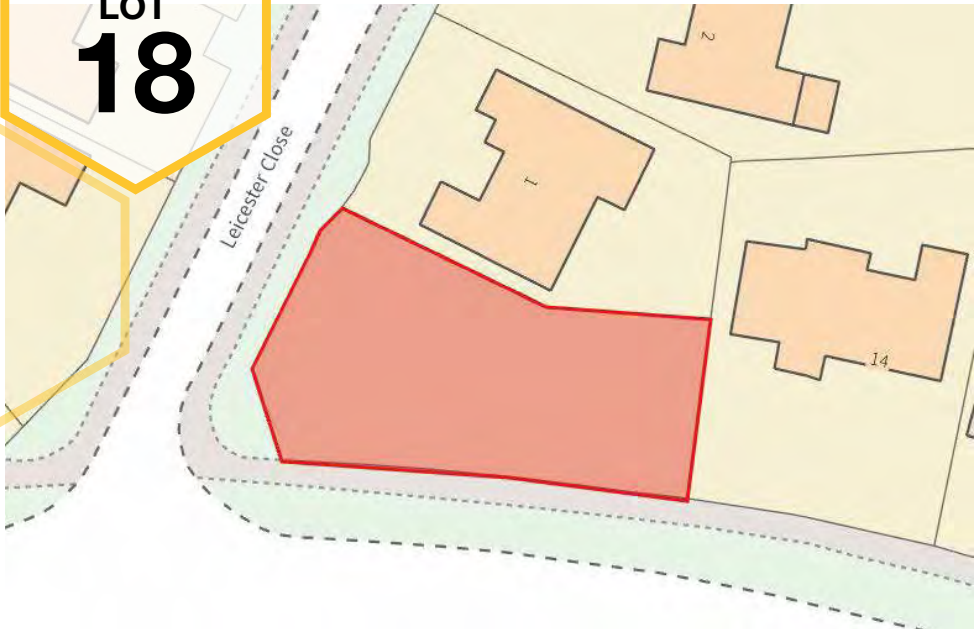
**Cannock bjb**

T 01543 500030

E [Cannock@bjbmail.com](mailto:Cannock@bjbmail.com)

\*Guide price **£80,000 plus**

LOT  
**18**



## Land at Leicester Close, Clayton, Newcastle-under-Lyme, Staffordshire, ST5 3BP

Scan or  
Click for  
further  
information  
about this  
property



- Residential Development Site
- Site Area: 0.21 Acre (849 Sq m)
- Full planning consent for
- One 3 bed detached bungalow
- Planning Ref: 22/00425/FUL
- Freehold
- EPC – N/A

### Legal Representative

**Annemarie McQuade**

McQuades Residential Conveyancing

T 01782 810875

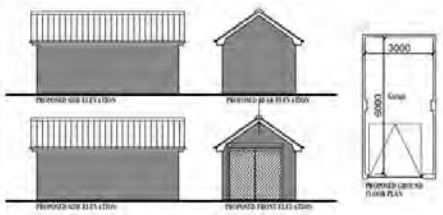
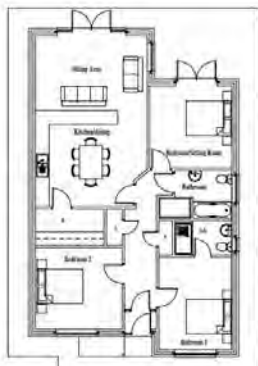
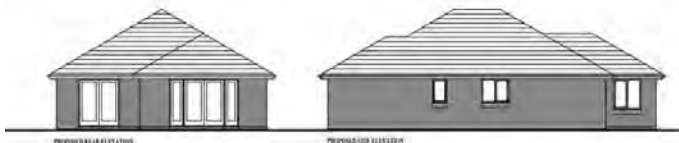
E [annemarie@mcquades.info](mailto:annemarie@mcquades.info)

### To apply contact:

**Land & New Homes bjb**

T 01782 211147

E [residential-land@bjbmail.com](mailto:residential-land@bjbmail.com)



# **AT HOWDENS FENTON WE SELL MORE THAN JUST KITCHENS**



**KITCHENS**

**DOORS & HARDWARE**



**APPLIANCES**

**FLOORING**

**CONSUMABLES**



**STAIR PARTS**

**WARDROBE DOORS**

**MOULDINGS**

**BEST LOCAL PRICE  
ON ALL OUR  
PRODUCTS!** *GUARANTEED*  
**AT HOWDENS  
FENTON**

**01782  
445100**  
**IN THE TRADE?**



**POP INTO STORE  
AND OPEN AN  
ACCOUNT WITH US ...**

\*Guide price **£115,000 plus**

LOT  
**19**



It is our understanding that this property is considered to be of a non-traditional construction and we therefore suggest that interested parties make enquiries of mortgage lenders as to whether the property is considered suitable for mortgage purposes.

## **26 Station Road, Scholar Green, Stoke-on-Trent, Staffordshire, ST7 3HJ**

Scan or  
Click for  
further  
information  
about this  
property



- **Detached bungalow**
- **Two bedrooms**
- **In need of modernisation**
- **Sizable plot**
- **Freehold**
- **Potential yield approx. 7% p/a**
- **Council Tax Band - C**
- **EPC – F**

### **Legal Representative**

**Chloe Heath**

**Poole Alcock Solicitors**

**T 01270 872683**

**E [Chloe.heath@poolealcock.co.uk](mailto:Chloe.heath@poolealcock.co.uk)**

### **To apply contact:**

**Alsager bjb**

**T 01270 877778**

**E [alsager@bjbmail.com](mailto:alsager@bjbmail.com)**

\*Guide price **£149,000 plus**

LOT  
**20**



## Flat 30 Upper Marshall Street, Birmingham, B1 1LA

Scan or  
Click for  
further  
information  
about this  
property



- Third floor apartment
- Two bedrooms, 1 en-suite
- Allocated secure parking
- City centre location
- Leasehold
- Potential yield approx. 9% p/a
- Council Tax Band - D
- EPC - B

### Legal Representative

**Thomas McLaughlin**

DWF Law

T 028 9023 0230

E [Tomas.McLaughlin@dwf.law](mailto:Tomas.McLaughlin@dwf.law)

### To apply contact:

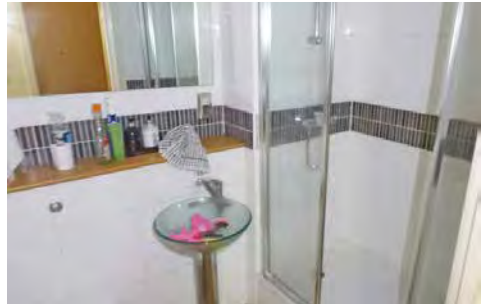
**Auction bjb**

T 0800 090 2200

E [auction@bjbmail.com](mailto:auction@bjbmail.com)

\*Guide price **£149,000 plus**

LOT  
**21**



## Flat 248 Upper Marshall Street, Birmingham, B1 1LP

Scan or  
Click for  
further  
information  
about this  
property



- Fifth floor apartment
- Two bedrooms, 1 en-suite
- Allocated secure parking
- City centre location
- Leasehold
- Potential yield approx. 9% p/a
- Council Tax Band - D
- EPC - C

### Legal Representative

**Thomas McLaughlin**

DWF Law

T 028 9023 0230

E [Tomas.McLaughlin@dwf.law](mailto:Tomas.McLaughlin@dwf.law)

### To apply contact:

**Auction bjb**

T 0800 090 2200

E [auction@bjbmail.com](mailto:auction@bjbmail.com)

\*Guide price **£60,000 plus**

LOT  
**22**



## 8 Trafalgar House, Cannock, West Mids, WS12 2GH

Scan or  
Click for  
further  
information  
about this  
property



- First floor flat
- Two bedrooms
- Previously Let @ £6,720 p/a
- Leasehold - 67 Years
- Potential yield approx. 13% p/a
- Council Tax Band – A
- EPC - C

**Legal Representative**

**Conveyancing**

**G2M Legal**

**T 0800 496020**

**E [legal@g2mgroup.co.uk](mailto:legal@g2mgroup.co.uk)**

**To apply contact:**

**Cannock bjb**

**T 01543 500030**

**E [Cannock@bjbmail.com](mailto:Cannock@bjbmail.com)**



\*Guide price **£55,000 plus**

LOT  
**23**



## **Builders Yard, Ramsey Street, Fenton, Stoke-on-Trent, Staffordshire ST4 4JW**

Scan or  
Click for  
further  
information  
about this  
property



- **Builders Yard & Building**
- **Workshop: 790 sq ft**
- **In need of renovation & repair**
- **Few minutes away from A500**
- **Freehold**
- **EPC – N/A**

**Legal Representative**

**Alexandra Bradbury**

**Clowes and Co**

**T 01782 444204**

**E alex@clowessolicitors.co.uk**

**To apply contact:**

**Commercial bjb**

**T 01782 212201**

**E commercial@bjbmail.com**

\*Guide price **£75,000 plus**

LOT  
**24**



## 2 Church Road, Biddulph, Stoke-on-Trent, Staffordshire, ST8 6LY

Scan or  
Click for  
further  
information  
about this  
property



- Semi-detached house
- Three bedrooms
- Currently tenanted @ £6,600
- Freehold
- Potential yield approx. 8% p/a
- Council Tax Band – A
- EPC - F

Legal Representative  
**TBC**

To apply contact:  
**Congleton bjb**  
T 01260 280000  
E [congleton@bjbmail.com](mailto:congleton@bjbmail.com)

\*Guide price **£87,000 plus**

LOT  
**25**



## 34 James Reckitt Avenue, Hull, City of Kingston upon Hull, HU8 7TP

Scan or  
Click for  
further  
information  
about this  
property



- Mid-townhouse
- Three bedrooms
- In need of modernisation
- Fitted out loft space
- Parking & garage
- Freehold
- Potential yield approx. 9% p/a
- Council Tax Band - B
- EPC - D

### Legal Representative

**TBC**

**Moore Barlow LLP**

**T 023 8071 8000**

**E lenders@moorebarlow.com**

### To apply contact:

**Auction bjb**

**T 01782 211180**

**E auction@bjbmail.com**

\*Guide price **£55,000 plus**

LOT  
**26**



## 8 Walley Place, Cobridge, Stoke-on-Trent, Staffordshire, ST6 2BJ

Scan or  
Click for  
further  
information  
about this  
property



- Mid-terrace house
- Two bedrooms
- Freehold
- Potential yield approx. 13% p/a
- Council Tax Band - A
- EPC - E

**Legal Representative**

**Chris Murphy**

**Whiteheads Solicitors**

**T 01782 615278**

**E [cpm@whiteheads.uk.com](mailto:cpm@whiteheads.uk.com)**

**To apply contact:**

**Hanley bjb**

**T 01782 202600**

**E [hanley@bjbmail.com](mailto:hanley@bjbmail.com)**

\*Guide price **£225,000 plus**

LOT  
**27**



## 79 Blurton Road, Blurton, Stoke-on-Trent, Staffordshire, ST3 2BS

Scan or  
Click for  
further  
information  
about this  
property



- Detached house
- Four bedrooms
- In need of modernisation
- Two outside buildings
- Large rear garden
- Freehold
- Potential yield approx. 6% p/a
- Council Tax Band – D
- EPC - D

### Legal Representative

**Samiya Hashmi**

Walters & Plaskitt

T 01782 819611

E [samiya@wpsolicitors.co.uk](mailto:samiya@wpsolicitors.co.uk)

### To apply contact:

**Longton bjb**

T 01782 594777

E [longton@bjbmail.com](mailto:longton@bjbmail.com)

\*Guide price **£128,000 plus**

LOT  
**28**



## 68 Woodshutts Street, Talke, Stoke-on-Trent, Staffordshire, ST7 1LB

Scan or  
Click for  
further  
information  
about this  
property



- Semi-detached house
- Three bedrooms
- In need of modernisation
- Large rear garden
- Freehold
- Potential yield approx. 13% p/a
- Council Tax Band - A
- EPC - C

### Legal Representative

**Richard Scholes**

RJS Solicitors

T 01782 645070

E [richard@rjssolicitors.com](mailto:richard@rjssolicitors.com)

### To apply contact:

**Kidsgrove bjb**

T 01782 784442

E [kidsgrove@bjbmail.com](mailto:kidsgrove@bjbmail.com)

**\*Declared Reserve £30,000 plus**

**LOT  
29**



The seller is a registered social landlord and is therefore prohibited from selling a property to anyone who is an employee or director of the seller, or was in the last 12 months an employee or director, or is a close relative of such a person or an agent on their behalf.

## Land at Attwood Street, Kidsgrove, Stoke-on-Trent, Staffordshire, ST7 4BP

Scan or  
Click for  
further  
information  
about this  
property



- Land comprising 4 domestic garages
- Area: 0.14 Acre (566 m<sup>2</sup>)
- Well-established residential area
- Potential for alternative uses STPP
- Freehold
- EPC – N/A

### Legal Representative

**Meera Singadia**

**Anthony Collins**

**T 0161 470 0321**

**E meera.singadia@anthonycollins.com**

### To apply contact:

**Land & New Homes bjb**

**T 01782 211147**

**E residential-land@bjbmail.com**



**\*Declared Reserve £50,000 plus**

**LOT  
30**



The seller is a registered social landlord and is therefore prohibited from selling a property to anyone who is an employee or director of the seller, or was in the last 12 months an employee or director, or is a close relative of such a person or an agent on their behalf.

## Land at Westfield Avenue, Audley, Stoke-on-Trent, Staffordshire, ST7 8EQ

Scan or  
Click for  
further  
information  
about this  
property



- Residential Development Site
- Area: 0.38 Acre (1214 m<sup>2</sup>)
- Full planning for
- Three 2 bed detached bungalows
- Planning Ref: 18/00147/FUL
- Freehold
- EPC – N/A

### Legal Representative

**Meera Singadia**

**Anthony Collins**

**T 0161 470 0321**

**E meera.singadia@anthonycollins.com**

### To apply contact:

**Land & New Homes bjb**

**T 01782 211147**

**E residential-land@bjbmail.com**







We are **successfully**  
managing property  
in **Hanley, Crewe and**  
**Newcastle Under-Lyme**  
and surrounding areas

Let smart:  
think **bjb**

## LANDLORDS

Are you satisfied with your  
current managing agent?

- When was your **last** rent review?
- When was your most **recent** condition report?
- When did your agent last **update** you on legislation?
- Has your agent offered you **protection** for non-payment of rent?



Please contact our Senior Lettings Agent Kyle Mellor  
for honest and up to date market advice.

T: **BJB Hanley – T: 01782 211120**  
E: **kylemellor@bjbmail.com**

**butters** <sup>bjb</sup>  
**john bee**



\*Guide price **£300,000 plus**

LOT  
**31**



## Brookdale, Uttoxeter Road, Blythe Bridge, Stoke-on-Trent, Staffordshire, ST11 9HQ

Scan or  
Click for  
further  
information  
about this  
property



- Detached house
- Four bedrooms
- In need of modernisation
- Long driveway
- Freehold
- Potential yield approx. 5% p/a
- Council Tax Band - F
- EPC - TBC

### Legal Representative

**Rachael Byles**

Woolliscrofts

T 01782 204000

E rbytes@woolliscrofts.co.uk

### To apply contact:

**Longton bjb**

T 01782 594777

E longton@bjbmail.com

\*Guide price **£360,000 plus**

LOT  
**32**



## **3 The Villas, Boothem, Stoke-on-Trent, Staffordshire, ST4 5AQ**

Scan or  
Click for  
further  
information  
about this  
property



- Semi-detached villa
- Grade II listed
- Six bedrooms
- Period features
- Freehold
- Council Tax Band - E
- EPC - TBC

### **Legal Representative**

**Steven Parks**

**Walters & Plaskitt**

**T 01782 819611**

**E [stevenpark@wpsolicitors.co.uk](mailto:stevenpark@wpsolicitors.co.uk)**

### **To apply contact:**

**Newcastle bjb**

**T 01782 6220155**

**E [newcastle@bjbmail.com](mailto:newcastle@bjbmail.com)**

\*Guide price **£350,000 plus**

LOT  
**33**



## Acton Bridge Nursery, Acton Bridge, Northwich, Cheshire, CW8 3PZ

Scan or  
Click for  
further  
information  
about this  
property



- Former Acton Bridge nursery
- Site approx. 1.08 acres
- Full planning for 3 bed bungalow
- Planning Ref. No: 22/00747/FUL
- Freehold
- Potential yield approx. 5% p/a
- Council Tax Band – TBC
- EPC – D (96)

### Legal Representative

**Gavin Wall**

Conveyancing Expert Ltd

T 0161 794 7799

E [g.wall@conveyancingexpert.co.uk](mailto:g.wall@conveyancingexpert.co.uk)

### To apply contact:

**Northwich bjb**

T 01606 352888

E [northwich@bjbmail.com](mailto:northwich@bjbmail.com)

\*Guide price **£55,000 plus**

LOT  
**34**



## Land at Whitehill Road, Kidsgrove, Stoke-on-Trent, Staffordshire, ST7 4DT

Scan or  
Click for  
further  
information  
about this  
property



- Residential Development Site
- Area: 0.15 Acre (607 m<sup>2</sup>)
- Outline Planning for;
- Two 2 bed semi-detached
- One 2 bed detached house
- Planning Ref: 23/00132/OUT
- Freehold
- EPC – N/A

### Legal Representative

**Clive Roberts**

**Minahan Hirst & Co**

T 0161 485 8131

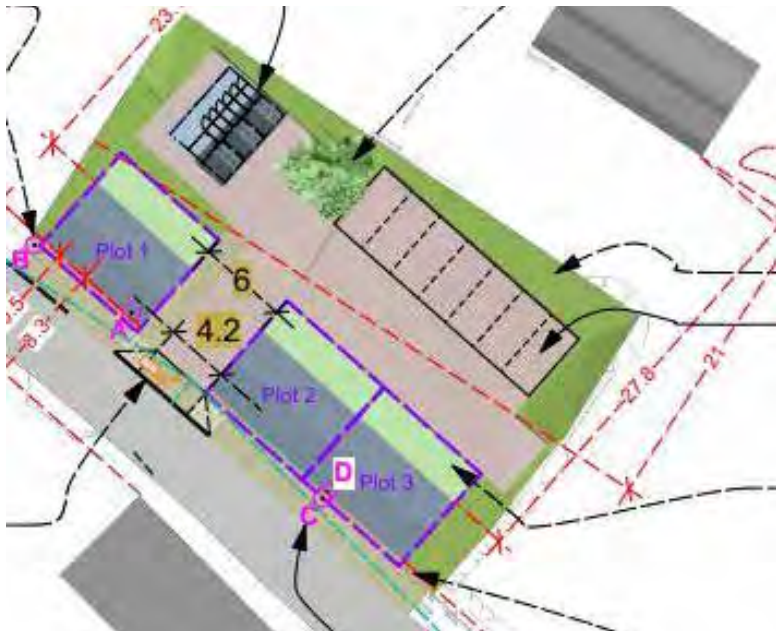
E [clive@minahan-hirst.co.uk](mailto:clive@minahan-hirst.co.uk)

### To apply contact:

**Land & New Homes bjb**

T 01782 211147

E [residential-land@bjbmail.com](mailto:residential-land@bjbmail.com)

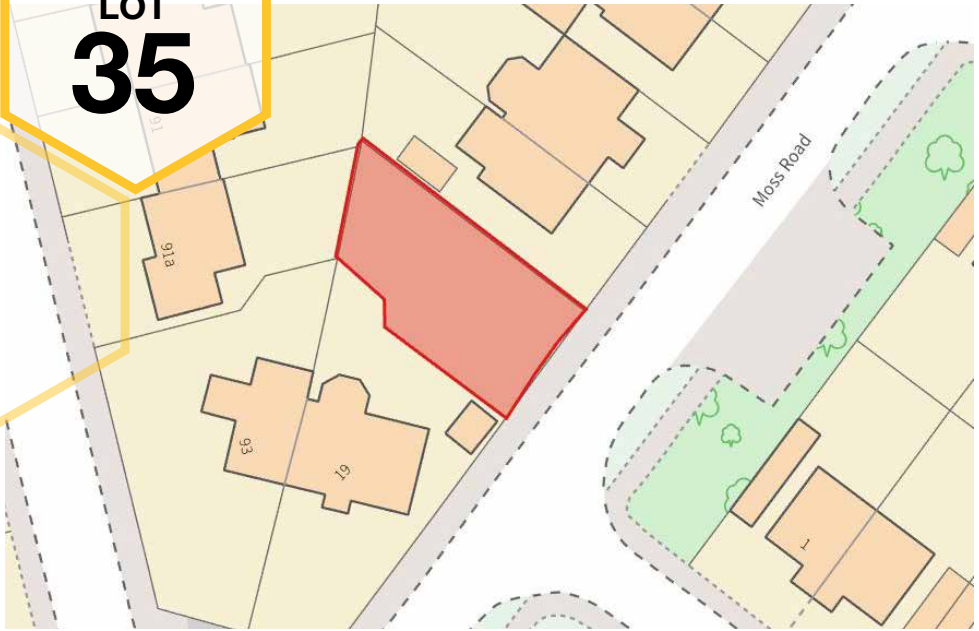


## Elevations



\*Guide price **£20,000 plus**

LOT  
**35**



## Land at Moss Road, Cannock, West Mids, WS11 6DP

Scan or  
Click for  
further  
information  
about this  
property



- Former Garden Land
- Site Area: 0.06 Acre (242 Sq m)
- Potential for alternative uses STPP
- Freehold
- EPC – N/A

**Legal Representative**  
**TBC**

**To apply contact:**  
**Land & New Homes bjb**  
**T 01782 211147**  
**E residential-land@bjbmail.com**



\*Guide price **£150,000 plus**

LOT  
**36**



## 94 Trentham Road, Dresden, Stoke-on-Trent, Staffordshire ST3 4ED

Scan or  
Click for  
further  
information  
about this  
property



- Two storey mixed use property
- Ground floor florist
- Business available by separate neg if required
- FF 1 bed flat previously let at £5,940 p/a
- Separate studio previously let at £1,440 p/a
- Main road location
- EPC - D

**Legal Representative**

**Gareth Kelly**

**Gittens McDonald**

**T 01978 366665**

**E sv@gittins-mcdonald.co.uk**

**To apply contact:**

**Commercial bjb**

**T 01782 212201**

**E commercial@bjbmail.com**

\*Guide price **£26,000 plus**

LOT  
**37**



## Room 25/Unit 21, Q Studios, North Street, Stoke, Stoke-on-Trent, Staffordshire, ST4 7FA

Scan or  
Click for  
further  
information  
about this  
property



- Student accommodation
- Self-contained pod
- Currently Let until end of term 2023
- Yielding £5,750 p/a
- Leasehold
- Potential yield approx. 22%
- Council Tax Band – N/A
- EPC – B

### Legal Representative

**Kerry Dundas**

Dundas Law

T 01782 528338

E [kerry@dundaslaw.co.uk](mailto:kerry@dundaslaw.co.uk)

### To apply contact:

**Hanley bjb**

T 01782 202600

E [hanley@bjbmail.com](mailto:hanley@bjbmail.com)

\*Guide price **£26,000 plus**

LOT  
**38**



## Room 26/Unit 22, Q Studios, North Street, Stoke, Stoke-on-Trent, Staffordshire, ST4 7FA

Scan or  
Click for  
further  
information  
about this  
property



- Student accommodation
- Self-contained pod
- Currently Let until end of term 2023
- Yielding £5,750 P/a
- Leasehold
- Potential yield approx. 22%
- Council Tax Band – N/A
- EPC – B

### Legal Representative

**Kerry Dundas**

Dundas Law

T 01782 528338

E [kerry@dundaslaw.co.uk](mailto:kerry@dundaslaw.co.uk)

### To apply contact:

**Hanley bjb**

T 01782 202600

E [hanley@bjbmail.com](mailto:hanley@bjbmail.com)

\*Guide price **£40,000 plus**

LOT  
**39**



## **Flat 34 Keele House, The Midway, Newcastle-under-Lyme, Staffordshire, ST5 1LD**

- Student accommodation
- One bedroom
- Leasehold
- Potential yield approx. 19% p/a
- Council Tax Band – C
- EPC - C

### **Legal Representative**

**Michael Devlin**

Axis Law

T 01270 696781

E michael.devlin@axisprofessional.co.uk

### **To apply contact:**

**Newcastle bjb**

T 01782 6220155

E newcastle@bjbmail.com

Scan or  
Click for  
further  
information  
about this  
property



\*Guide price **£40,000 plus**

LOT  
**40**



## Flat 50 Keele House, The Midway, Newcastle-under-Lyme, Staffordshire, ST5 1LD

- Student accommodation
- One bedroom
- Leasehold
- Potential yield approx. 19% p/a
- Council Tax Band – C
- EPC - C

### Legal Representative

**Michael Devlin**

Axis Law

T 01270 696781

E michael.devlin@axisprofessional.co.uk

### To apply contact:

**Newcastle bjb**

T 01782 6220155

E newcastle@bjbmail.com

Scan or  
Click for  
further  
information  
about this  
property





# Follow us on Facebook

**@buttersjohnbeeauctions**  
and stay ahead of  
the game.

Keep up to date with news  
and events, up and coming  
instructions, results and  
updates on past lots.

**butters** john bee<sup>bjb</sup>

**facebook**<sup>®</sup>

\*Guide price **£225,000 plus**

LOT  
**41**



## 83 Queensgate, Northwich, Cheshire, CW8 1DU

Scan or  
Click for  
further  
information  
about this  
property



- Semi-detached house
- Three bedrooms
- In need of modernisation
- Driveway & gardens
- Freehold
- Potential yield approx. 5% p/a
- Council Tax Band – C
- EPC - G

### Legal Representative

**Natalie Meadows**

**Moss Haselhurst**

**T 01606 536797**

**E [Natalie.Meadows@mosshaselhurst.co.uk](mailto:Natalie.Meadows@mosshaselhurst.co.uk)**

### To apply contact:

**Northwich bjb**

**T 01606 352888**

**E [northwich@bjbmail.com](mailto:northwich@bjbmail.com)**

\*Guide price **£72,000 plus**

LOT  
**42**



## 9 Lewin Street, Middlewich, Cheshire, CW10 9BG

Scan or  
Click for  
further  
information  
about this  
property



- Mid-terrace house
- Two bedrooms
- First floor bathroom
- Currently tenanted @ £6,900
- Parking to the rear
- Freehold
- Potential yield approx. 11%
- Council Tax Band – A
- EPC - D

### Legal Representative

**Kerry Dundas**

Dundas Law

T 01782 528338

E [kerry@dundaslaw.co.uk](mailto:kerry@dundaslaw.co.uk)

### To apply contact:

**Winsford bjb**

T 01606 593444

E [winsford@bjbmail.com](mailto:winsford@bjbmail.com)



\*Guide price **£425,000**

LOT  
**43**



## Peace Cottage, 14 – 16 Bridge Street, Kenilworth, Warwickshire, CV8 1BP

Scan or  
Click for  
further  
information  
about this  
property



- 18th century cottage
- Grade II listed
- Three bedrooms
- In need of modernisation
- Period features
- Attractive front garden
- Freehold
- Council Tax Band - E
- EPC - D

Legal Representative

**Lyndsay Peters**

**Mander Hadley Solicitors**

**T** 01926 857631

**E** [LyndsayPeters@manderhadley.co.uk](mailto:LyndsayPeters@manderhadley.co.uk)

To apply contact:

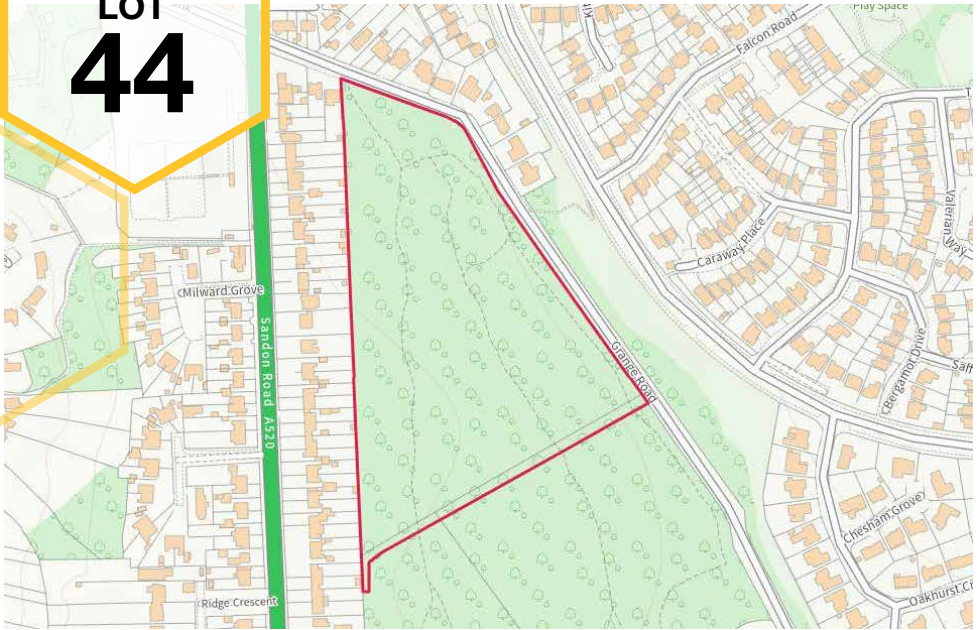
**haart Kenilworth**

**T** 01926 864408

**E** [kenilworthHRT@spicerhaart.co.uk](mailto:kenilworthHRT@spicerhaart.co.uk)

\*Guide price **£100,000 plus**

LOT  
**44**



## Plot 1 - Land at Grange Road, Meir Heath Stoke-On-Trent, Staffordshire, ST3 7BH

- Amenity land
- Area: 10.20 Acres (4.13 ha)
- Potential for alternative uses STPP
- Freehold
- EPC – N/A

Legal Representative

**Abdi Ebrahimi**

Tinsdills

T 01782 652331

E [abdi.ebrahimi@tinsdills.co.uk](mailto:abdi.ebrahimi@tinsdills.co.uk)

To apply contact:

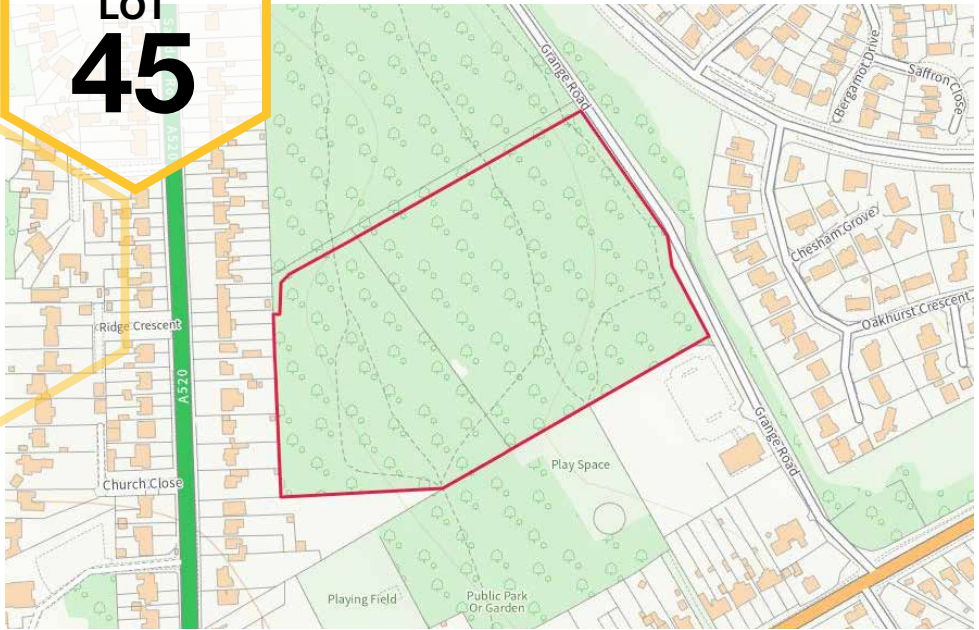
**Land & New Homes bjb**

T 01782 211147

E [residential-land@bjbmail.com](mailto:residential-land@bjbmail.com)

\*Guide price **£100,000 plus**

LOT  
**45**



## Plot 2 - Land at Grange Road, Meir Heath Stoke-On-Trent, Staffordshire, ST3 7BH

- Amenity land
- Area: 11.5 Acres (4.65 ha)
- Potential for alternative uses STPP
- Freehold
- EPC – N/A

### Legal Representative

**Abdi Ebrahimi**

Tinsdills

T 01782 652331

E [abdi.ebrahimi@tinsdills.co.uk](mailto:abdi.ebrahimi@tinsdills.co.uk)

### To apply contact:

**Land & New Homes bjb**

T 01782 211147

E [residential-land@bjbmail.com](mailto:residential-land@bjbmail.com)

For all your  
**commercial  
property  
needs**

- 🟡 **Commercial Sales**
- 🟡 **Commercial Lettings**
- 🟡 **Commercial Management**



## 7 Years **Most Active Agent** in Staffordshire.

To speak to a member of our professional commercial property team, telephone **01782 212201** or email **commercial@bjbmail.com**

**butters john bee** <sup>bjb</sup>



\*Guide price **£165,000 plus**

LOT  
**46**



## 4-6 Market Street, Longton, Stoke-on-Trent, Staffordshire ST3 1BX

Scan or  
Click for  
further  
information  
about this  
property



- Two extensive retail premises
- No.4 Lease £9,000 p/a rising to £10,000 p/a
- Expiring 06/07/25
- No.6 Lease £9,000 p/a, expiring 31/07/30
- Town Centre Location
- Combined income £18,000 p/a rising to £19,000 p/a 2024
- EPC – D(93) C (70)

### Legal Representative

**Sarah Wakeman**

Tinsdills Solicitors

T [Sarah.Wakeman@tinsdills.co.uk](mailto:Sarah.Wakeman@tinsdills.co.uk)

E 01782 652308

### To apply contact:

**Commercial bjb**

T 01782 212201

E [commercial@bjbmail.com](mailto:commercial@bjbmail.com)

\*Guide price **£120,000 plus**

LOT  
**47**



## 84 Hawkesford Crescent, Wolverhampton, West Mids, WV10 9SQ

Scan or  
Click for  
further  
information  
about this  
property



- Semi-Detached house
- Three bedrooms
- Currently tenanted @ £8,400 p/a
- Off road parking
- Freehold
- Potential yield approx. 9% p/a
- Council Tax Band - A
- EPC - D

**Legal Representative**

**Conveyancing**

**G2M Legal**

**T 0800 496020**

**E [legal@g2mgroup.co.uk](mailto:legal@g2mgroup.co.uk)**

**To apply contact:**

**Cannock bjb**

**T 01543 500030**

**E [Cannock@bjbmail.com](mailto:Cannock@bjbmail.com)**

\*Guide price **£110,000 plus**

LOT  
**48**



## 571 West Street, Crewe, Cheshire, CW2 8SH

Scan or  
Click for  
further  
information  
about this  
property



- Semi-detached house
- Three bedrooms
- In need of modernisation
- Driveway, gardens front & rear
- Freehold
- Potential yield approx. 9% p/a
- Council Tax Band – A
- EPC - D

### Legal Representative

**Sharon Plane**

Goddard Dunbar

T 01270 580537

E [sharon@goddarddunbar.co.uk](mailto:sharon@goddarddunbar.co.uk)

### To apply contact:

**Crewe bjb**

T 01270 213541

E [Crewe@bjbmail.com](mailto:Crewe@bjbmail.com)

\*Guide price **£55,000 plus**

LOT  
**49**



## **37 St Lukes Street, Hanley, Stoke-on-Trent, Staffordshire, ST1 3PZ**

Scan or  
Click for  
further  
information  
about this  
property



- Mid-terrace house
- Two bedrooms
- Not inspected by Auctioneer
- Currently tenanted @ £5,100 p/a
- Freehold
- Potential yield approx. 13% p/a
- Council Tax Band - A
- EPC - D

### **Legal Representative**

**Chris Murphy**

**Whiteheads Solicitors**

**T 01782 615278**

**E [cpm@whiteheads.uk.com](mailto:cpm@whiteheads.uk.com)**

### **To apply contact:**

**Hanley bjb**

**T 01782 202600**

**E [hanley@bjbmail.com](mailto:hanley@bjbmail.com)**



\*Guide price **£52,000 plus**

LOT  
**50**



## 31 Henry Street, Sandyford, Stoke-on-Trent, Staffordshire, ST6 5HP

Scan or  
Click for  
further  
information  
about this  
property



- Mid-terrace house
- Two bedrooms
- Not inspected by Auctioneer
- Currently tenanted @ £5,280 p/a
- Freehold
- Potential yield approx. 13% p/a
- Council Tax Band - A
- EPC - E

### Legal Representative

**Chris Murphy**

Whiteheads Solicitors

T 01782 615278

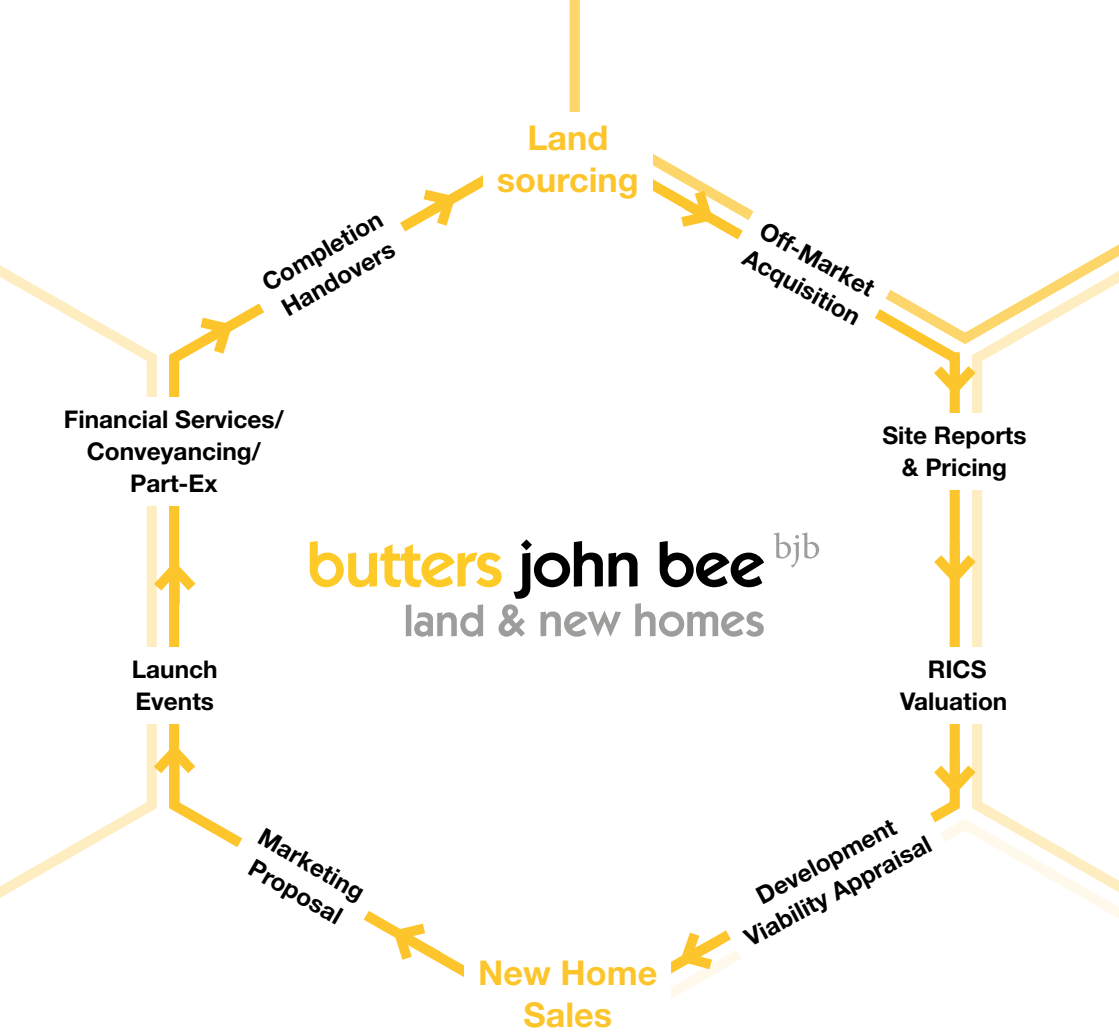
E [cpm@whiteheads.uk.com](mailto:cpm@whiteheads.uk.com)

### To apply contact:

**Hanley bjb**

T 01782 202600

E [hanley@bjbmail.com](mailto:hanley@bjbmail.com)



**For a no obligation discussion please contact:**

**Carlos Hernandez**  
Regional New Homes Sales Manager  
T 07741 152287  
E CarlosHernandez@bjbmail.com

**Paul G. Beardmore BSC MRICS**  
Director Residential Land  
T 01782 211147  
E PaulBeardmore@bjbmail.com

**Sam Bowyer**  
New Homes Sales Manager  
T 07966 447520  
E sambowyer@bjbmail.com

**Alexander Djukic BSc. MSc.**  
Graduate Surveyor  
T 01782 211147  
E alexdjukic@bjbmail.com

\*Guide price **£99,000 plus**

LOT  
**51**



The seller is a registered social landlord and is therefore prohibited from selling a property to anyone who is an employee or director of the seller, or was in the last 12 months an employee or director, or is a close relative of such a person or an agent on their behalf.

## **11 Galleys Bank, Kidsgrove, Stoke-on-Trent, Staffordshire, ST7 4DD**

Scan or  
Click for  
further  
information  
about this  
property



- **Semi-detached house**
- **Three bedrooms**
- **In need of modernisation**
- **Off road parking & gardens**
- **Freehold**
- **Potential yield approx. 11%**
- **Council Tax Band - B**
- **EPC - D**

### **Legal Representative**

**Thomas Shepherd**

**Anthony Collins Solicitors LLP**

**T 0161 470 0321**

**E Thomas.Shepherd@anthonycollins.com**

### **To apply contact:**

**Kidsgrove bjb**

**T 01782 784442**

**E Kidsgrove@bjbmail.com**

\*Guide price **£225,000 plus**

LOT  
**52**



## Land at Sycamore Avenue, Crewe, Cheshire, CW1 4DT

Scan or  
Click for  
further  
information  
about this  
property



- Residential Development Site
- Area: 0.26 Acre (1052 m<sup>2</sup>)
- Full planning for
- Four 2 bedroom detached bungalows
- Planning Ref: 21/5881N
- Freehold
- EPC – N/A

### Legal Representative

**Timothy Halliday**

Eric Whitehead

T 01538 758907

E [timothyhalliday@ericwhitehead.co.uk](mailto:timothyhalliday@ericwhitehead.co.uk)

### To apply contact:

**Land & New Homes bjb**

T 01782 211147

E [residential-land@bjbmail.com](mailto:residential-land@bjbmail.com)

Floor Area = 50.6 sqM



**East Elevation** Scale 1:50



**North Elevation.** Scale 1:100



\*Guide price **£275,000 plus**

LOT  
**53**



## Land & Premises at Sneyd Street, Hanley, Stoke-on-Trent, Staffordshire, ST6 2NP

Scan or Click for further information about this property



- Residential Development Site
- Site Area: 0.86 Acre (0.38 Ha)
- Expired Planning Consent for
- Thirteen 3 bed houses
- Two existing buildings 5,537 sq ft (514 m<sup>2</sup>)
- Plus good size yard area
- Vacant possession on completion
- Freehold
- EPC – N/A

### Legal Representative

**Abdi Ebrahimi**

Tinsdills Solicitors

T 01782 652331

E [Abdi.Ebrahimi@tinsdills.co.uk](mailto:Abdi.Ebrahimi@tinsdills.co.uk)

### To apply contact:

**Land & New Homes bjb**

T 01782 211147

E [residential-land@bjbmail.com](mailto:residential-land@bjbmail.com)



We offer a whole range of no obligation advice. **Book your appointment now.**

# Just mortgage and protection advice

- ✓ First Time Buyers
- ✓ House Purchases
- ✓ Remortgage
- ✓ Capital Raising
- ✓ Self Employed
- ✓ Let To Buy\*
- ✓ Shared Ownership
- ✓ Self Build mortgages
- ✓ Debt Consolidation
- ✓ Buy To Let\*
- ✓ Life Insurance
- ✓ Critical Illness Cover
- ✓ Income Protection
- ✓ Buildings & Contents Insurance
- ✓ Accident & Sickness Cover

[www.justmortgages.co.uk](http://www.justmortgages.co.uk)

THINK CAREFULLY BEFORE SECURING OTHER DEBTS AGAINST YOUR HOME/PROPERTY. YOUR HOME/PROPERTY MAY BE REPOSSESSED IF YOU DO NOT KEEP UP REPAYMENTS ON YOUR MORTGAGE

**Just  
Mortgages**

\*Some buy to let and let to buy mortgages are not regulated by the Financial Conduct Authority.

Approved by The Openwork Partnership on 06/04/2023.





\*Guide price **£60,000 plus**

LOT  
**54**



## 1 Edison Street, Fenton, Stoke-on-Trent, Staffordshire, ST4 4NL

Scan or  
Click for  
further  
information  
about this  
property



- End-terrace house
- Two bedrooms
- Tenant has served notice
- Freehold
- Potential yield approx. 9% p/a
- Council Tax Band - B
- EPC - E

**Legal Representative**

**Chris Murphy**

**Whiteheads Solicitors**

**T 01782 615278**

**E cpm@whiteheads.uk.com**

**To apply contact:**

**Longton bjb**

**T 01782 594777**

**E longton@bjbmail.com**

\*Guide price **£110,000 plus**

LOT  
**55**



## 52 Station Road, Lostock Gralam, Northwich, Cheshire, CW9 7PS

Scan or  
Click for  
further  
information  
about this  
property



- Mid-terrace house
- Three bedrooms
- First floor bathroom
- In need of modernisation
- Freehold
- Potential yield approx. 10% p/a
- Council Tax Band – B
- EPC - D

### Legal Representative

**John Spittle**

Susan Howarth & Co

T 01606 48777

E [johnspittle@susanhowarthsolicitors.co.uk](mailto:johnspittle@susanhowarthsolicitors.co.uk)

### To apply contact:

**Northwich bjb**

T 01606 352888

E [northwich@bjbmail.com](mailto:northwich@bjbmail.com)

LOT  
**56**



## 34 High Street, Arnold, Nottingham, NG5 7DZ

Scan or  
Click for  
further  
information  
about this  
property



- Detached house
- Grade II listed
- Three bedrooms
- In need of modernisation
- Recently fitted kitchen
- Freehold
- Potential yield approx. 9% p/a
- Council Tax Band - D
- EPC - E

Legal Representative

**Mandy Smith**

**Edward Solicitors**

**T** 0115 922 4537

**E** [ms@edwardscllegg.com](mailto:ms@edwardscllegg.com)

To apply contact:

**haart Arnold**

**T** 01926 864408

**E** [arnoldHRT@spicerhaart.co.uk](mailto:arnoldHRT@spicerhaart.co.uk)

LOT  
**57**



haart



There is no EWS1 certificate for this property, we therefore recommend cash buyers only.

## Apartment 327 Citispace South, 11 Regent Street, Leeds, LS2 7JQ

- Third floor apartment
- One bedroom
- Open plan with kitchenette
- Leasehold
- Potential yield approx. 10% p/a
- Council Tax Band - B
- EPC - B

Legal Representative

**Margaret Forster**  
**Aberdein Considine**

**T** 0191 607 8459

**E** mforster@acandco.com

To apply contact:

**bjb auction**

**T** 0800 090 2200

**E** auction@bjbmail.com

Scan or  
Click for  
further  
information  
about this  
property



\*Guide price **£95,000 plus**

LOT  
**58**



## 20 Market Street, Longton, Stoke-on-Trent, Staffordshire ST3 1BX

Scan or  
Click for  
further  
information  
about this  
property



- Mixed use part let investment
- GF Retail let at £11,000 p/a
- 5 Year lease from 03/22
- Potential conversion upper floors to residential STPP
- Separate land available subject to negotiation
- EPC - E

### Legal Representative

**Ray Basnett**

Woolliscrofts

T 01782 204000

E [rbasnett@woolliscrofts.co.uk](mailto:rbasnett@woolliscrofts.co.uk)

### To apply contact:

**Commercial bjb**

T 01782 212201

E [commercial@bjbmail.com](mailto:commercial@bjbmail.com)

\*Guide price **£225,000 plus**

LOT  
**59**



## 23 Cemetery Road, Salford, Manchester, M5 5WG

Scan or  
Click for  
further  
information  
about this  
property



- Mid-terrace property
- Four bed HMO
- Two en-suite
- Currently fully let at £25,620 p/a
- Recently refurbished
- Freehold
- Council Tax Band – D
- EPC - D

### Legal Representative

**Natalie Beard**

SAS Daniels

T 01260 282300

E [Natalie.beard@sasdaniels.co.uk](mailto:Natalie.beard@sasdaniels.co.uk)

### To apply contact:

**Congleton bjb**

T 01260 280000

E [congleton@bjbmail.com](mailto:congleton@bjbmail.com)

\*Guide price **£126,000 plus**

LOT  
**60**



## 358 Hungerford Road, Crewe, Cheshire, CW1 6HD

Scan or  
Click for  
further  
information  
about this  
property



- Semi-detached house
- Three spacious bedrooms
- In need of modernisation
- Off road rear parking & garden
- Freehold
- Potential yield approx. 7% p/a
- Council Tax Band – B
- EPC - D

### Legal Representative

**Jonathon Manning**

Hibberts Solicitors

T 01270 215117

E [jhm@hibberts.com](mailto:jhm@hibberts.com)

### To apply contact:

**Crewe bjb**

T 01270 213541

E [Crewe@bjbmail.com](mailto:Crewe@bjbmail.com)

# Professional services

- ◆ Survey and Valuation
- ◆ Property Management
- ◆ Business Rate Assessments
- ◆ Energy Performance Certificates
- ◆ Rent Reviews
- ◆ Lease Renewals
- ◆ Dilapidations
- ◆ Schedule of Condition
- ◆ Compulsory Purchase and Compensation
- ◆ Capital Allowance Tax Relief Survey

**Your Regional Commercial  
Property Consultants**

**01782 212201**

**butters john bee** <sup>bjb</sup>





\*Guide price **£159,000 plus**

LOT  
**61**



## 29 Ashburton Street, Cobridge, Stoke-on-Trent, Staffordshire, ST6 2BX

Scan or  
Click for  
further  
information  
about this  
property



- End-terrace property
- Currently 8 bed HMO
- Ready to rent
- Freehold
- Potential yield approx. 13% p/a
- Council Tax Band – B
- EPC - D

### Legal Representative

**Steven Park**

Walters & Plaskitt

T 01782 819611

E [stevenpark@wpsolicitors.co.uk](mailto:stevenpark@wpsolicitors.co.uk)

### To apply contact:

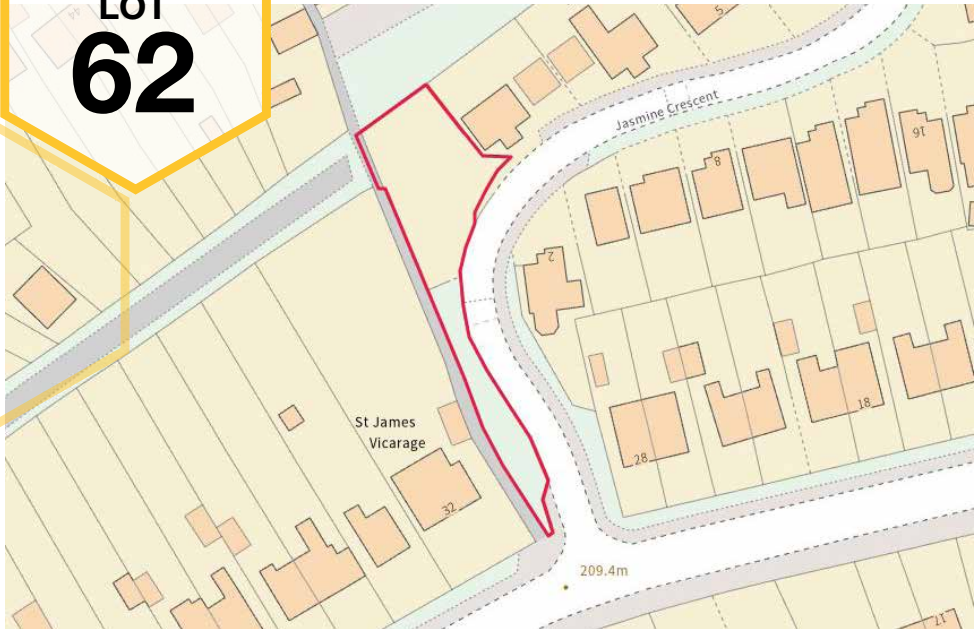
**Hanley bjb**

T 01782 202600

E [hanley@bjbmail.com](mailto:hanley@bjbmail.com)

\*Guide price **£40,000 plus**

LOT  
**62**



## Land at Jasmine Crescent, Newchapel, Stoke-on-Trent, Staffordshire, ST7 4GZ

Scan or  
Click for  
further  
information  
about this  
property



- Residential Development Site
- Site Area: 0.14 Acre (566 Sq m)
- Outline planning for
- One 4 Bedroom House
- Planning Ref: 21/00617/OUT
- Freehold
- EPC – N/A

### Legal Representative

**Gill Squire**

GCS Property Solicitors

T 01785 604820

E [Gillsquire@gcspropertysolicitors.co.uk](mailto:Gillsquire@gcspropertysolicitors.co.uk)

### To apply contact:

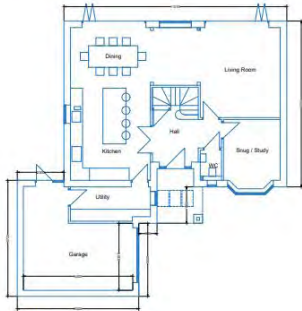
**Land & New Homes bjb**

T 01782 211147

E [residential-land@bjbmail.com](mailto:residential-land@bjbmail.com)



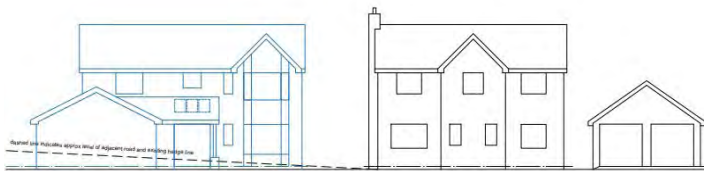
First Floor Plan



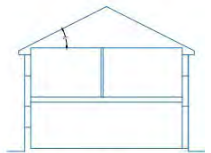
Ground Floor Plan



Proposed Block / Roof Plan - 1:100



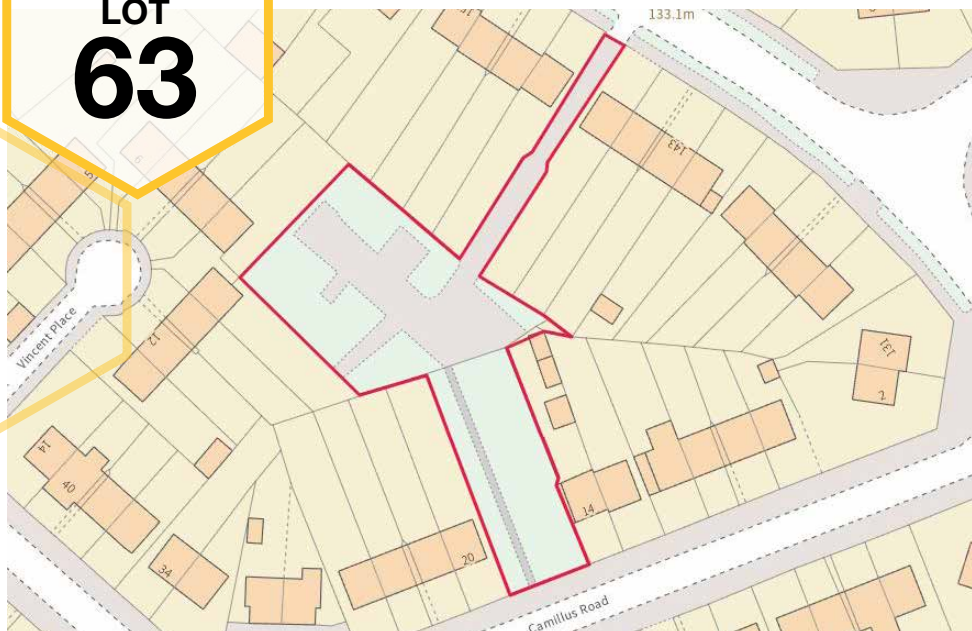
Street Elevation - 1:100



Typical Section - 1:100

**\*Declared Reserve £50,000 plus**

**LOT  
63**



The seller is a registered social landlord and is therefore prohibited from selling a property to anyone who is an employee or director of the seller, or was in the last 12 months an employee or director, or is a close relative of such a person or an agent on their behalf.

## Land at Camillus Road, Knutton, Newcastle-under-Lyme, Staffordshire, ST5 6DY

Scan or  
Click for  
further  
information  
about this  
property



- Residential Development Site
- Area: 0.41 Acre (1659 m<sup>2</sup>)
- Full planning consent for
- Two 2 bed semi- detached bungalows
- One 3 bedroom detached house
- Planning Ref: 22/00344/FUL
- Freehold
- EPC – N/A

### Legal Representative

**Meera Singadia**

**Anthony Collins**

T 0161 470 0321

E [meera.singadia@anthonycollins.com](mailto:meera.singadia@anthonycollins.com)

### To apply contact:

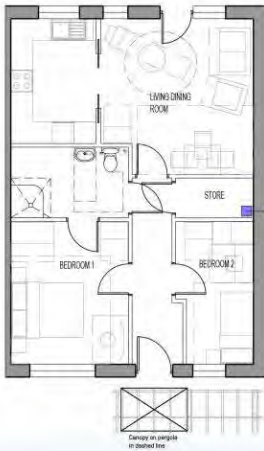
**Land & New Homes bjb**

T 01782 211147

E [residential-land@bjbmail.com](mailto:residential-land@bjbmail.com)



## 2B3P BUNGALOW 64.0m<sup>2</sup>



PUMP FOR DOMESTIC MIST  
SPRINKLER SYSTEM

### Materials Schedule

- ① Walls: Red Multi brick (type lbc). Grade F2 frost resistance
- ② Roof: Concrete interlocking roof tiles in slate grey
- ③ Windows/ Doors: SBD compliant uPVC in grey frame colour. Note face of frame to be set back 75mm from face of brickwork
- ④ Fascia / soffit / barge boards in blackuPVC
- ⑤ Black uPVC rainwater goods
- ⑥ GRP composite SBD compliant door. IG Doors pattern XING 1M or equal and approved. Colour to be Golden Oak (stain)
- ⑦ Timber monopitch canopy with trellis to detail
- ⑧ Brickwork 225mm soldier course to window heads and cills to front elevation



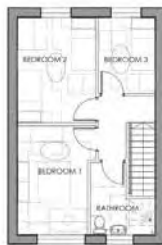
FRONT ELEVATION



SIDE ELEVATION



ground floor  
3B5P HOUSE  
85.0m<sup>2</sup>



first floor



\*Guide price **£54,000 plus**

LOT  
**64**



## 9 South Street, Ball Green, Stoke-on-Trent, Staffordshire, ST6 8AX

Scan or  
Click for  
further  
information  
about this  
property



- Mid-terrace house
- Two bedrooms
- Currently tenanted @ £6,000 p/a
- Freehold
- Potential yield approx. 13% p/a
- Council Tax Band - A
- EPC - D

### Legal Representative

**Tracy Willcocks**

Goddard Dunbar

T 01782 284320

E [tracy@goddarddunbar.co.uk](mailto:tracy@goddarddunbar.co.uk)

### To apply contact:

**Hanley bjb**

T 01782 202600

E [hanley@bjbmail.com](mailto:hanley@bjbmail.com)

\*Guide price **£95,000 plus**

LOT  
**65**



## 12 Stafford Street, Stone, Staffordshire ST15 8QW

Scan or  
Click for  
further  
information  
about this  
property



- Prominent three storey property
- Grade Two listed building
- NIA: 624 sq ft (57.97 Sq m)
- Parking to rear and nearby
- Freehold
- Vacant possession
- EPC – N/A

### Legal Representative

**Tom Wellings**

ORJ Solicitors

T 01785 275386

E [tom.wellings@orj.co.uk](mailto:tom.wellings@orj.co.uk)

### To apply contact:

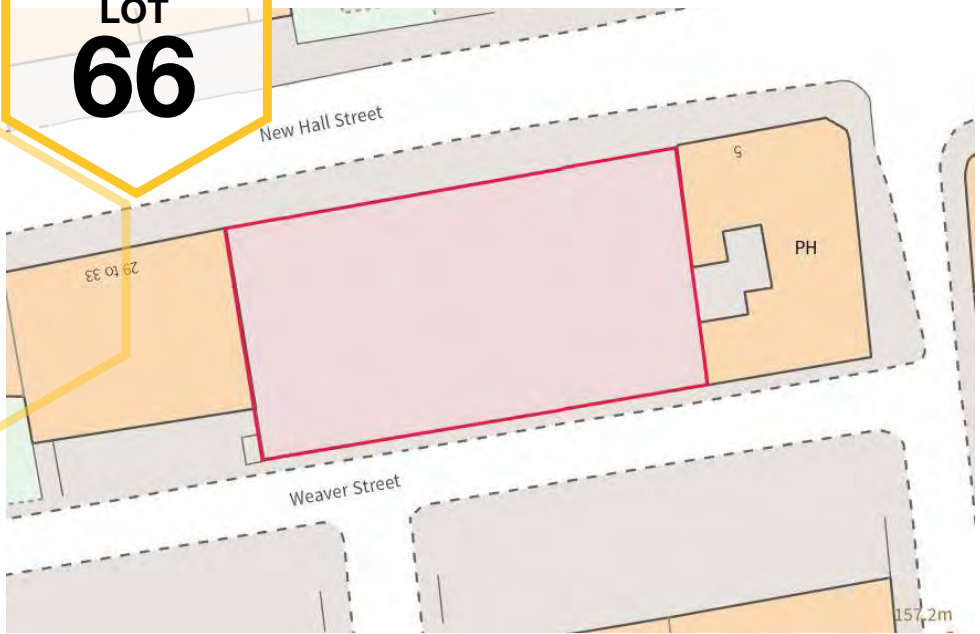
**Commercial bjb**

T 01782 212201

E [commercial@bjbmail.com](mailto:commercial@bjbmail.com)

\*Guide price **£250,000 plus**

**LOT  
66**



## Land at New Hall Street, Hanley, Stoke-on-Trent, ST1 5HQ

Scan or  
Click for  
further  
information  
about this  
property



- Residential Development Site
- Area: 0.18 Acre (728 m<sup>2</sup>)
- Full planning consent for
- 32 City Centre Apartments
- Planning Ref: 60469/FUL
- Freehold
- EPC – N/A

### Legal Representative

**Stephen Hiscocks**

Howells Legal

T 01656 641065

E [stephen.hiscocks@howellslegal.com](mailto:stephen.hiscocks@howellslegal.com)

### To apply contact:

**Land & New Homes bjb**

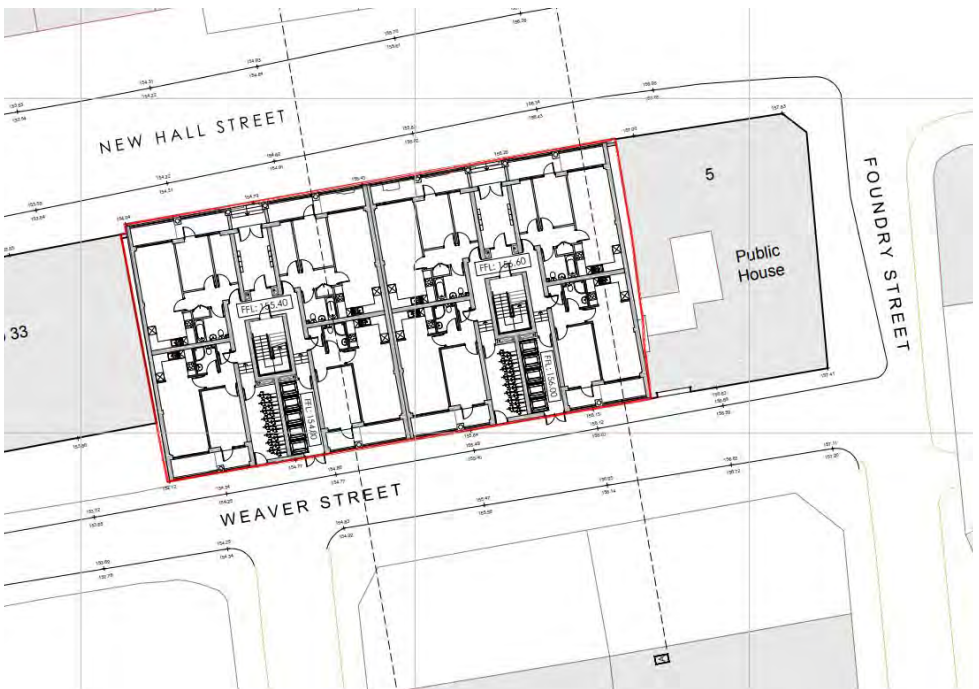
T 01782 211147

E [residential-land@bjbmail.com](mailto:residential-land@bjbmail.com)





ELEVATION



\*Guide price **£100,000 plus**

LOT  
**67**



## 39 Nantwich Road, Middlewich, Cheshire, CW10 9HD

Scan or  
Click for  
further  
information  
about this  
property



- Detached house
- Two bedrooms
- Original features
- In need of modernisation
- Courtyard to the rear
- Freehold
- Potential yield approx. 10% p/a
- Council Tax Band – B
- EPC - E

### Legal Representative

**Andrew Williamson**

**Bowcock & Cuerden**

**T 01270 611106**

**E [awilliamson@bowcockcuerden.co.uk](mailto:awilliamson@bowcockcuerden.co.uk)**

### To apply contact:

**Northwich bjb**

**T 01606 352888**

**E [northwich@bjbmail.com](mailto:northwich@bjbmail.com)**

\*Guide price **£75,000 plus**

LOT  
**68**



## **376-378 Ruxley Road, Bucknall, Stoke-on-Trent, Staffordshire, ST2 9BA**

Scan or  
Click for  
further  
information  
about this  
property



- Former commercial property
- Potential for multiple flats
- Investment opportunity
- In need of modernisation
- Freehold
- Potential Yield approx. 10% p/a
- Council Tax Band – A
- EPC - TBC

### **Legal Representative**

**James Whitmore**

**Clyde, Chappell & Botham**

**T 01782 599577**

**E james@clydechappellandbotham.com**

### **To apply contact:**

**Hanley bjb**

**T 01782 202600**

**E hanley@bjbmail.com**

\*Guide price **£146,000 plus**

LOT  
**69**



## 17 Grays Close, Scholar Green, Stoke-on-Trent, Staffordshire, ST7 3LU

Scan or  
Click for  
further  
information  
about this  
property



- Semi-detached house
- Three bedrooms
- In need of modernisation
- Rear private garden
- Driveway & garage
- Freehold
- Potential income approx. 7% p/a
- Council Tax Band – C
- EPC - D

**Legal Representative**

**Jonathon Manning**

Hibberts Solicitors

T 01270 215117

E [jhm@hibberts.com](mailto:jhm@hibberts.com)

**To apply contact:**

**Alsager bjb**

T 01270 877778

E [alsager@bjbmail.com](mailto:alsager@bjbmail.com)

\*Guide price **£65,000 plus**

LOT  
**70**



## 261 High Street, Tunstall, Stoke-on-Trent, Staffordshire ST6 5EG

Scan or  
Click for  
further  
information  
about this  
property



- Three storey mid terrace
- Retail/office premises
- In need of modernisation
- 2 garages and external toilets to rear
- 612 sq ft
- Freehold
- EPC - G

### Legal Representative

**Kelly Myatt**

Tinsdills

T 01538 399332

E [kelly.myatt@tinsdills.co.uk](mailto:kelly.myatt@tinsdills.co.uk)

### To apply contact:

**Commercial bjb**

T 01782 212201

E [commercial@bjbmail.com](mailto:commercial@bjbmail.com)

\*Guide price **£130,000 plus**

LOT  
**71**



## Land at Russell Road, Winsford, Cheshire, CW7 1EP

Scan or  
Click for  
further  
information  
about this  
property



- Residential Development Site
- Area: 0.10 Acre (404 m<sup>2</sup>)
- Full planning consent for
- One 3 bedroom detached house
- One 2 bed detached dorma bungalow
- Planning Ref: 22/00268/FUL
- Freehold
- EPC – N/A

### Legal Representative

**Hannah Stazaker**

Goddard Dunbar & Associates

T 01782 284320

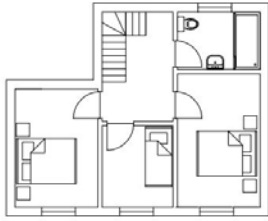
E [Hannah.Stazaker@goddarddunbar.co.uk](mailto:Hannah.Stazaker@goddarddunbar.co.uk)

### To apply contact:

**Land & New Homes bjb**

T 01782 211147

E [residential-land@bjbmail.com](mailto:residential-land@bjbmail.com)



Proposed First Floor Plan



Proposed Side Elevation



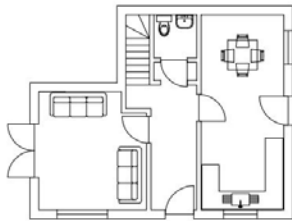
Proposed Side Elevation



Proposed Rear Elevation



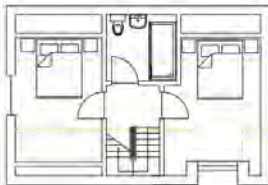
Proposed Front Elevation



Proposed Ground Floor Plan



Proposed Block Plan



Proposed First Floor Plan



Proposed Side Elevation



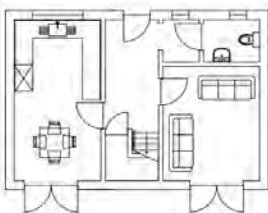
Proposed Rear Elevation



Proposed Side Elevation



Proposed Front Elevation



Proposed Ground Floor Plan



Proposed Block Plan

**butters** <sup>bjb</sup>  
**john bee**



**The region's  
number 1 property  
auctioneer\***

**With 9 auctions in 2023 it's the  
fastest way to sell your property.**

For a free appraisal of your  
property call **0800 090 2200**  
or email **[auction@bjbmail.com](mailto:auction@bjbmail.com)**

**butters john bee** <sup>bjb</sup>

\* Source: EI Group



\*Guide price **£110,000 plus**

LOT  
**72**



## **Middle Cottage, Crackley Gates, Newcastle-under-Lyme, Staffordshire, ST5 6AW**

Scan or  
Click for  
further  
information  
about this  
property



- Mid-terrace cottage
- One bedroom
- Period features
- Well-presented interior
- Off road parking
- Freehold
- Potential yield approx. 6% p/a
- Council Tax Band - B
- EPC - F

### **Legal Representative**

**Kerry Dundas**

Dundas Law

T 01782 528338

E [kerry@dundaslaw.co.uk](mailto:kerry@dundaslaw.co.uk)

### **To apply contact:**

**Newcastle bjb**

T 01782 6220155

E [newcastle@bjbmail.com](mailto:newcastle@bjbmail.com)

\*Guide price **£91,000 plus**

LOT  
**73**



## 80 Southgate, Sutton Hill, Telford, Shropshire, TF7 4HF

Scan or  
Click for  
further  
information  
about this  
property



- End-terrace house
- Three bedrooms
- Currently tenanted @ £7,200 p/a
- Freehold
- Potential Yield approx. 10% p/a
- Council Tax Band – A
- EPC - D

### Legal Representative

**Conveyancing**

G2M Legal

T 0800 496020

E [legal@g2mgroup.co.uk](mailto:legal@g2mgroup.co.uk)

### To apply contact:

**Cannock bjb**

T 01543 500030

E [Cannock@bjbmail.com](mailto:Cannock@bjbmail.com)

\*Guide price **£55,000 plus**

LOT  
**74**



## 69 Nash Peake Street, Tunstall, Stoke-on-Trent, Staffordshire, ST6 5BS

Scan or  
Click for  
further  
information  
about this  
property



- Mid-terrace house
- Two bedrooms
- First floor bathroom
- In need of modernisation
- Yard to the rear
- Freehold
- Potential yield approx. 12% p/a
- Council Tax Band – A
- EPC - C

### Legal Representative

**Tracy Willcocks**

Goddard Dunbar

T 01782 284 320

E [tracy@goddarddunbar.co.uk](mailto:tracy@goddarddunbar.co.uk)

### To apply contact:

**Hanley bjb**

T 01782 202600

E [hanley@bjbmail.com](mailto:hanley@bjbmail.com)

\*Guide price **£81,000 plus**

LOT  
**75**



## 198 West Street, Crewe, Cheshire, CW1 3HN

Scan or  
Click for  
further  
information  
about this  
property



- Generous end-terrace house
- Four bedrooms
- Two reception rooms
- In need of modernisation
- Yard to the rear
- Freehold
- Potential yield approx. 10% p/a
- Council Tax Band – B
- EPC - D

### Legal Representative

**Kerry Dundas**

Dundas Law

T 01782 528338

E [kerry@dundaslaw.co.uk](mailto:kerry@dundaslaw.co.uk)

### To apply contact:

**Crewe bjb**

T 01270 213541

E [Crewe@bjbmail.com](mailto:Crewe@bjbmail.com)

\*Guide price **£73,000 plus**

LOT  
**76**



We understand this property has previously suffered some structural movement, and we would advise any interested parties to carry out their own investigations prior to making a bid at auction.

## **129 High Street, Silverdale, Newcastle-under-Lyme, Staffordshire, ST5 6LR**

Scan or Click for further information about this property



- End-terrace house
- Two bedrooms
- In need of modernisation
- Driveway & gardens
- Freehold
- Potential yield approx. 12% p/a
- Council Tax Band - E
- EPC - E

### **Legal Representative**

**Kerry Dundas**

**Dundas Law**

**T 01782 528338**

**E [kerry@dundaslaw.co.uk](mailto:kerry@dundaslaw.co.uk)**

### **To apply contact:**

**Newcastle bjb**

**T 01782 6220155**

**E [newcastle@bjbmail.com](mailto:newcastle@bjbmail.com)**



## What we offer:

- ◆ Portfolio reviews
- ◆ Advice on expanding investment portfolios and maximising returns
- ◆ Membership of our Investor Club
- ◆ Bespoke portfolio management services
- ◆ A single point of contact for investment landlords within the Investor Services Team
- ◆ One terms of business and agreed fee structure for investors with multi properties
- ◆ Hassle free takeover of management service for existing investment portfolios

**butters john  
bee Investor  
Services Team**

Contact **Kate Hurles**  
Head of Landlord Investment  
T 07960 120267  
E [investorserviceteam@spicerhaart.co.uk](mailto:investorserviceteam@spicerhaart.co.uk)

**butters john bee**<sup>bjb</sup>  
INVESTOR SERVICES TEAM



\*Guide price **£75,000 plus**

LOT  
**77**



The seller is a registered social landlord and is therefore prohibited from selling a property to anyone who is an employee or director of the seller, or was in the last 12 months an employee or director, or is a close relative of such a person or an agent on their behalf.

## **5 & 5a Queen Street, Kidsgrove, Stoke-on-Trent, Staffordshire, ST7 4AH**

Scan or  
Click for  
further  
information  
about this  
property



- End-terrace house
- 2 self-contained flats
- Both one bedroom
- In need of modernisation
- Freehold
- Potential yield approx. 17% p/a
- Council Tax Band – A
- EPC – D/D

### **Legal Representative**

**Gagandeep Kaur**

**Anthony Collins Solicitors**

**T 0121 214 3608**

**E [Gagandeep.Kaur@anthonicollins.com](mailto:Gagandeep.Kaur@anthonicollins.com)**

### **To apply contact:**

**Hanley bjb**

**T 01782 202600**

**E [hanley@bjbmail.com](mailto:hanley@bjbmail.com)**

\*Guide price **£54,000 plus**

LOT  
**78**



## 34 Lower Mayer Street, Hanley, Stoke-on-Trent, Staffordshire, ST1 2EA

Scan or  
Click for  
further  
information  
about this  
property



- Mid-terrace house
- Two bedrooms
- Currently tenanted @ £6,000 p/a
- Freehold
- Potential yield approx. 10% p/a
- Council Tax Band - A
- EPC - E

### Legal Representative

**Clint Hughes**

Jamesons Solicitors

T 01782 719009

E [clinthughes@jamesons-conveyancing.co.uk](mailto:clinthughes@jamesons-conveyancing.co.uk)

### To apply contact:

**Hanley bjb**

T 01782 202600

E [hanley@bjbmail.com](mailto:hanley@bjbmail.com)



\*Guide price **£119,000 plus**

LOT  
**79**



## 4 Everest Road, Kidsgrove, Stoke-on-Trent, Staffordshire, ST7 4DW

Scan or  
Click for  
further  
information  
about this  
property



- Semi-detached house
- Three bedrooms
- In need of modernisation
- Off road parking
- Freehold
- Potential yield approx. 9%
- Council Tax Band - A
- EPC - E

### Legal Representative

**Gagandeep Kaur**

Anthony Collins Solicitors

T 0121 214 3608

E [Gagandeep.Kaur@anthonycollins.com](mailto:Gagandeep.Kaur@anthonycollins.com)

### To apply contact:

**Kidsgrove bjb**

T 01782 784442

E [kidsgrove@bjbmail.com](mailto:kidsgrove@bjbmail.com)

\*Guide price **£85,500 plus**

LOT  
**80**



## 46 Alton Street, Crewe, Cheshire, CW2 7QF

Scan or  
Click for  
further  
information  
about this  
property



- Mid-terrace house
- Three bedrooms
- Two generous reception rooms
- In need of modernisation
- Rear private garden
- Freehold
- Potential yield approx. 11% p/a
- Council Tax Band – A
- EPC - C

### Legal Representative

**Jonathon Manning**

Hibberts Solicitors

T 01270 215117

E [jhm@hibberts.com](mailto:jhm@hibberts.com)

### To apply contact:

**Crewe bjb**

T 01270 213541

E [crewe@bjbmail.com](mailto:crewe@bjbmail.com)

\*Guide price **£50,000 plus**

LOT  
**81**



## 11 Summerbank Road, Sandyford, Stoke-on-Trent, Staffordshire, ST6 5EY

Scan or  
Click for  
further  
information  
about this  
property



- End-terrace house
- Two bedrooms
- Not inspected by Auctioneer
- Currently tenanted @ £4,200 p/a
- Freehold
- Potential yield approx. 13% p/a
- Council Tax Band - A
- EPC - D

### Legal Representative

**Chris Murphy**

Whiteheads Solicitors

T 01782 615278

E [cpm@whiteheads.uk.com](mailto:cpm@whiteheads.uk.com)

### To apply contact:

**Hanley bjb**

T 01782 202600

E [hanley@bjbmail.com](mailto:hanley@bjbmail.com)

# Notes

# Common Auction Conditions

7th Edition. Reproduced with the consent of  RICS

The general conditions (including any extra general conditions) apply to the contract except to the extent that they are varied by special conditions or by an addendum.

## Glossary

This glossary applies to the **auction conduct conditions** and the **sale conditions**.

Wherever it makes sense:

- singular words can be read as plurals, and plurals as singular words;
- a "person" includes a corporate body;
- words of one gender include the other genders;
- references to legislation are to that legislation as it may have been modified or re-enacted by the date of the **auction** or the **contract date** (as applicable); and
- where the following words printed in bold black type appear in bold blue type they have the specified meanings.

**Actual completion date** The date when **completion** takes place or is treated as taking place for the purposes of apportionment and calculating interest.

**Addendum** An amendment or addition to the **conditions** or to the **particulars** or to both whether contained in a supplement to the **catalogue**, a written notice from the auctioneers or an oral announcement at the **auction**.

**Agreed completion date** Subject to **condition** G9.3:

- (a) the date specified in the **special conditions**; or
- (b) if no date is specified, 20 **business days** after the **contract date**; but if that date is not a **business day** the first subsequent **business day**.

**Approved financial institution** Any Bank or Building Society that is regulated by a competent UK regulatory authority or is otherwise acceptable to the **auctioneers**.

**Arrears** Arrears of rent and other sums due under the **tenancies** and still outstanding on the **actual completion date**.

**Arrears schedule** The arrears schedule (if any) forming part of the **special conditions**.

**Auction** The auction advertised in the **catalogue**.

**Auction conduct conditions** The conditions so headed, including any extra auction conduct conditions.

**Auctioneers** The auctioneers at the **auction**.

**Business day** Any day except (a) a Saturday or a Sunday; (b) a bank holiday in England and Wales; or (c) Good Friday or Christmas Day.

**Buyer** The person who agrees to buy the **lot** or, if applicable, that person's personal representatives: if two or more are jointly the **buyer** their obligations can be enforced against them jointly or against each of them separately.

**Catalogue** the catalogue for the **auction** as it exists at the date of the **auction** (or, if the catalogue is the different, the date of the **contract**) including any **addendum** and whether printed or made available electronically.

**Completion** unless the **seller** and the **buyer** otherwise agree, the occasion when they have both complied with the obligations under the **contract** that they are obliged to comply with prior to **completion**, and the amount payable on **completion** has been unconditionally received in the **seller's** conveyancer's client account (or as otherwise required by the terms of the **contract**)

**Condition** One of the **auction conduct conditions** or **sales conditions**.

**Contract** The contract by which the **seller** agrees to sell and the **buyer** agrees to buy the **lot**.

**Contract date** The date of the **auction** or, if the **lot** is not sold at the **auction**:

- (a) the date of the **sale memorandum** signed by both the **seller** and **buyer**; or
- (b) if contracts are exchanged, the date of exchange. If exchange is not effected in person or by an irrevocable agreement to exchange made by telephone, fax or electronic mail the date of exchange is the date on which both parts have been signed and posted or otherwise placed beyond normal retrieval.

**Documents** Documents of title (including, if title is registered, the entries on the register and the title plan) and other documents listed or referred to in the **special conditions** relating to the lot.

**Extra general conditions** Any **conditions** added or varied by the **auctioneers** starting at condition G30

**Financial charge** A charge to secure a loan or other financial indebtedness (not including a rentcharge).

**General conditions** That part of the **sale conditions** so headed, including any extra general conditions.

**Interest rate** if not specified in the **special conditions**, the higher of 6% and 4% above the base rate from time to time of Barclays bank plc. The **interest rate** will also apply to any judgment debt, unless the statutory rate is higher.

**Lot** Each separate property described in the **catalogue** or (as the case may be) the property that the **seller** has agreed to sell and the **buyer** to buy (including **chattels**, if any).

**Old arrears** **Arrears** due under any of the **tenancies** that are not "new tenancies" as defined by the Landlord and Tenant (Covenants) Act 1995.

**Particulars** The section of the **catalogue** that contains descriptions of each lot (as varied by any **addendum**).

**Practitioner** An insolvency practitioner for the purposes of the Insolvency Act 1986 (or, in relation to jurisdictions outside the United Kingdom, any similar official).

**Price** The price that the **buyer** agrees to pay for the **lot**.

**Ready to complete** Ready, willing and able to complete: if **completion** would enable the **seller** to discharge all **financial charges** secured on the **lot** that have to be discharged by **completion**, then those outstanding financial charges do not prevent the **seller** from being **ready to complete**.

**Sale conditions** The **general conditions** as varied by any **special conditions** or **addendum**.

**Sale memorandum** The form so headed (whether or not set out in the **catalogue**) in which the terms of the **contract** for the sale of the **lot** are recorded.

**Seller** The person selling the **lot**. If two or more are jointly the **seller** their obligations can be enforced against them jointly or against each of them separately.

**Special conditions** Those of the **sale conditions** so headed that relate to the **lot**.

**Tenancies** Tenancies, leases, licences to occupy and agreements for lease and any documents varying or supplemental to them.

**Tenancy schedule** The tenancy schedule (if any) forming part of the **special conditions**.

**Transfer** Transfer includes a conveyance or assignment (and "to transfer" includes "to convey" or "to assign").

**TUPE** The Transfer of Undertakings (Protection of Employment) Regulations 2006.

**VAT** Value Added Tax or other tax of a similar nature.

**VAT option** An option to tax.

**We (and us and our)** The **auctioneers**.

**You (and your)** Someone who has a copy of the **catalogue** or who attends or bids at the **auction**, whether or not a **buyer**.

## Important notice

A prudent buyer will, before bidding for a lot at an auction:

- Take professional advice from a conveyancer and, in appropriate cases, a chartered surveyor and an accountant;
- Read the conditions;
- Inspect the lot;
- Carry out usual searches and make usual enquiries;
- Check the content of all available leases and other documents relating to the lot;
- Have finance available for the deposit and purchase price;
- Check whether VAT registration and election is advisable;

The conditions assume that the buyer has acted like a prudent buyer.

If you choose to buy a lot without taking these normal precautions you do so at your own risk.

## Auction Conduct Conditions

**A1** Introduction the **auction conduct conditions** apply wherever the **lot** is located

A1.1 Words in bold blue type have special meanings, which are defined in the Glossary.

A1.2 The **catalogue** is issued only on the basis that **you** accept these **auction conduct conditions**. They govern **our** relationship with **you** and cannot be disapplied or varied by the **sale conditions** (even by a **condition** purporting to replace the whole of the Common Auction Conditions). They can be varied only if **we** agree.

### A2 Our role

A2.1 As agents for each **seller** we have authority to:

(a) prepare the **catalogue** from information supplied by or on behalf of each **seller**;

(b) offer each **lot** for sale;

(c) sell each **lot**;

(d) receive and hold deposits;

(e) sign each **sale memorandum**; and

(f) treat a **contract** as repudiated if the **buyer** fails to sign a **sale memorandum** or pay a deposit as required by these **auction conduct conditions**.

A2.2 **Our** decision on the conduct of the **auction** is final.

A2.3 **We** may cancel the **auction**, or alter the order in which **lots** are offered for sale. **We** may also combine or divide **lots**. A **lot** may be sold or withdrawn from sale prior to the **auction**.

A2.4 **You** acknowledge that to the extent permitted by law **we** owe **you** no duty of care and you have no claim against **us** for any loss.

A2.5 **We** may refuse to admit one or more persons to the **auction** without having to explain why

A2.6 **You** may not be allowed to bid unless **you** provide such evidence of **your** identity and other information as **we** reasonably require from all bidders

### A3 Bidding and reserve prices

A3.1 All bids are to be made in pounds sterling exclusive of any applicable **VAT**.

A3.2 **We** may refuse to accept a bid. **We** do not have to explain why.

A3.3 If there is a dispute over bidding **we** are entitled to resolve it, and **our** decision is final.

A3.4 Unless stated otherwise each **lot** is subject to a reserve price (which may be fixed just before the **lot** is offered for sale). If no bid equals or exceeds that reserve price the **lot** will be withdrawn from the **auction**.

A3.5 Where there is a reserve price the **seller** may bid (or ask **us** or another agent to bid on the **seller's** behalf) up to the reserve price but may not make a bid equal to or exceeding the reserve price. **You** accept that it is possible that all bids up to the reserve price are bids made by or on behalf of the **seller**.

A3.6 Where a guide price (or range of prices) is given that guide is the minimum price at which, or range of prices within which, the **seller** might be prepared to sell at the date of the guide price. But guide prices may change. The last published guide price will normally be at or above any reserve price, but not always – as the **seller** may fix the final reserve price just before bidding commences.

### A4 The particulars and other information

A4.1 **We** have taken reasonable care to prepare **particulars** that correctly describe each **lot**. The **particulars** are based on information supplied by or on behalf of the **seller**. **You** need to check that the information in the **particulars** is correct.

A4.2 If the **special conditions** do not contain a description of the **lot**, or simply refer to the relevant **lot** number, you take the risk that the description contained in the **particulars** is incomplete or inaccurate, as the **particulars** have not been prepared by a conveyancer and are not intended to form part of a legal contract.

A4.3 The **particulars** and the **sale conditions** may change prior to the **auction** and it is **your** responsibility to check that **you** have the correct versions.

A4.4 If **we** provide information, or a copy of a document, provided by others **we** do so only on the basis that **we** are not

responsible for the accuracy of that information or document.

### A5 The contract

A5.1 A successful bid is one **we** accept as such (normally on the fall of the hammer). This **condition** A5 applies to **you** if **you** make the successful bid for a **lot**.

A5.2 **You** are obliged to buy the **lot** on the terms of the **sale memorandum** at the **price** **you** bid plus **VAT** (if applicable).

A5.3 **You** must before leaving the **auction**:

(a) provide all information **we** reasonably need from **you** to enable us to complete the **sale memorandum** (including proof of your identity if required by us);

(b) sign the completed **sale memorandum**; and

(c) pay the deposit.

A5.4 If **you** do not **we** may either:

(a) as agent for the **seller** treat that failure as **your** repudiation of the **contract** and offer the **lot** for sale again: the **seller** may then have a claim against **you** for breach of contract; or (b) sign the **sale memorandum** on **your** behalf.

A5.5 The deposit:

(a) is to be held as stakeholder where **VAT** would be chargeable on the deposit were it to be held as agent for the **seller**, but otherwise is to be held as stated in the **sale conditions**; and

(b) must be paid in pounds sterling by cheque or by bankers' draft made payable to **us** on an **approved financial institution**. The extra auction conduct conditions may state if **we** accept any other form of payment

(c) is to be held by **us** (or, at **our** option, the **seller's** conveyancer)

A5.6 **We** may retain the **sale memorandum** signed by or on behalf of the **seller** until the deposit has been received in cleared funds.

A5.7 If the **buyer** does not comply with its obligations under the **contract** then:

(a) **you** are personally liable to buy the **lot** even if **you** are acting as an agent; and

(b) **you** must indemnify the **seller** in respect of any loss the **seller** incurs as a result of the **buyer's** default.

A5.8 Where the **buyer** is a company **you** warrant that the **buyer** is properly constituted and able to buy the **lot**.

A5.9 where we hold the deposit as stakeholder we are authorised to release it (and interest on it if applicable) to the **seller** on **completion** or, if **completion** does not take place, to the person entitled to it under the **sale conditions**.

### A6 Extra Auction Conduct Conditions

A6.1 Despite any **condition** to the contrary:

(a) The minimum deposit **we** accept is £1,000 (or the total **price**, if less). A **special condition** may, however, require a higher minimum deposit

(b) Sub-clause (a) of **Auction Conduct Condition** A5.5 shall be deemed to be deleted and shall be replaced with the following: "(a) is to be held as agent for the **seller** unless expressly stated otherwise in the **special conditions** provided that where **VAT** would be chargeable on the deposit were it to be held as agent for the **seller**, the deposit will be held as stakeholder despite any contrary provision in any **condition**; and" (c) where the deposit is paid to **us** to be held as stakeholder, **we** may if **we** choose transfer all or part of it to the **seller's** conveyancer for them to hold as stakeholder in **our** place. Any part of the deposit not so transferred will be held by **us** as stakeholder.

A6.2 **The buyer** will pay an administration fee of £1,000 plus vat to **us** for each **lot** purchased at the **auction**, prior to **auction** or post **auction** in addition to the deposit.

A6.3 **The buyer** will provide proof of identity and residency to **us**.

A6.4 **We** may accept payment by debit or credit card. Credit card payments carry a 2.5% surcharge. Credit card payment is not allowed for payment of deposit.

A6.5 **We** may refuse admittance to any person attending the **auction**. **We** do not have to explain why.

A6.6 **The buyer** will be photographed at the auction before the contract is signed.

A6.7 **The Seller** will not be under any obligation to remove any rubbish or other items whatsoever from the **lot** prior to **completion** of the purchase and the **Buyer** will not be allowed to delay **completion** or refuse to complete or claim compensation in respect of any rubbish or other items remaining on the **lot**.

## General Conditions

Words in small capitals have the special meanings defined in the Glossary.

The **general conditions** (as we supplement or change them by any **extra general conditions** or **addendum**) are compulsory but may be disapplied or changed in relation to one or more **lots** by **special conditions**. The template form of **sale memorandum** is not compulsory but is to be varied only if we agree. The template forms of **special conditions** and schedules are recommended, but are not compulsory and may be changed by the **seller** of a **lot**

### G1 The lot

G1.1 The **lot** (including any rights to be granted or reserved, and any exclusions from it) is described in the **special conditions**, or if not so described the **lot** is that referred to in the **sale memorandum**.

G1.2 The **lot** is sold subject to any **tenancies** disclosed by the **special conditions**, but otherwise with vacant possession on **completion**.

G1.3 From the **contract date** the **seller** has no obligation to insure the **lot** and the **buyer** bears all risks of loss or damage unless (a) the **lot** is sold subject to a **tenancy** that requires the **seller** to insure the **lot**

(b) the **special conditions** require the **seller** to insure the **lot**

G1.4 The **lot** is also sold subject to such of the following as may affect it, whether they arise before or after the **contract date** and whether or not they are disclosed by the **seller** or are apparent from inspection of the lot or from the **documents**:

(a) matters registered or capable of registration as local land charges;

(b) matters registered or capable of registration by any competent authority or under the provisions of any statute;

(c) notices, orders, demands, proposals and requirements of any competent authority;

(d) charges, notices, orders, restrictions, agreements and other matters relating to town and country planning, highways or public health;

(e) rights, easements, quasi-easements, and wayleaves;

(f) outgoing and other liabilities;

(g) any interest which overrides, within the meaning of the Land Registration Act 2002;

(h) matters that ought to be disclosed by the searches and enquiries a prudent buyer would make, whether or not the **buyer** has made them; and

(i) anything the **seller** does not and could not reasonably know about.

G1.5 Where anything subject to which the **lot** is sold would expose the **seller** to liability the **buyer** is to comply with it and indemnify the **seller** against that liability.

G1.6 The **seller** must notify the **buyer** of any notices, orders, demands, proposals and requirements of any competent authority of which it learns after the **contract date** but the **buyer** must comply with them and keep the **seller** indemnified.

G1.7 The **lot** does not include any tenant's or trade fixtures or fittings.

G1.8 Where chattels are included in the **lot** the **buyer** takes them as they are at **completion** and the **seller** is not liable if they are not fit for use.

G1.9 The **buyer** buys with full knowledge of:

(a) the **documents**, whether or not the **buyer** has read them; and

(b) the physical condition of the **lot** and what could reasonably be discovered on inspection of it, whether or not the **buyer** has inspected it.

G1.10 The **buyer** is not to rely on the information contained in the **particulars** but may rely on the **seller's** conveyancer's written replies to preliminary enquiries to the extent stated in those replies.

### G2 Deposit

G2.1 The amount of the deposit is the greater of:

(a) any minimum deposit stated in the **auction conduct conditions** (or the total **price**, if this is less than that minimum); and

(b) 10% of the **price** (exclusive of any **VAT** on the **price**).

G2.2 The deposit

(a) must be paid in pounds sterling by cheque or banker's draft drawn on an **approved financial institution** (or by any other means of payment that the **auctioneers** may accept); and

(b) is to be held as stakeholder unless the **auction conduct conditions** provide that it is to be held as agent for the **seller**.

G2.3 Where the **auctioneers** hold the deposit as stakeholder they are authorised to release it (and interest on it if applicable) to the **seller** on **completion** or, if **completion** does not take place, to the person entitled to it under the **sale conditions**.

G2.4 If a cheque for all or part of the deposit is not cleared on first presentation the **seller** may treat the **contract** as at an end and bring a claim against the **buyer** for breach of contract.

G2.5 Interest earned on the deposit belongs to the **seller** unless the **sale conditions** provide otherwise.

### G3 Between contract and completion

G3.1 From the **contract date** the **seller** has no obligation to insure the **lot** and the **buyer** bears all risks of loss or damage unless:

(a) the **lot** is sold subject to a **tenancy** that requires the **seller** to insure the **lot**

(b) the **special conditions** require the **seller** to insure the **lot**;

(c) if the **buyer** so requests, and pays any additional premium, use reasonable endeavours to increase the sum insured or make other changes to the policy;

(d) at the request of the **buyer** use reasonable endeavours to have the **buyer's** interest noted on the policy if it does not cover a contracting purchaser;

(e) unless otherwise agreed, cancel the insurance at **completion**, apply for a refund of premium and (subject to the rights of any tenant or other third party) pay that refund to the **buyer**; and

(f) (subject to the rights of any tenant or other third party) hold on trust for the **buyer** any insurance payments that the **seller** receives in respect of loss or damage arising after the **contract date** or assign to the **buyer** the benefit of any claim; and the **buyer** must on **completion** reimburse to the **seller** the cost of that insurance (to the extent not already paid by the **buyer** or a tenant or other third party) for the period from and including the **contract date** to **completion**.

G3.2 No damage to or destruction of the **lot** nor any deterioration in its condition, however caused, entitles the **buyer** to any reduction in **price**, or to delay **completion**, or to refuse to complete.

G3.3 Section 47 of the Law of Property Act 1925 does not apply.

G3.4 Unless the **buyer** is already lawfully in occupation of the **lot** the **buyer** has no right to enter into occupation prior to **completion**.

### G4 Title and identity

G4.1 Unless **condition** G4.2 applies, the **buyer** accepts the title of the **seller** to the **lot** as at the **contract date** and may raise no requisition or objection except in relation to any matter that occurs after the **contract date**.

G4.2 If any of the **documents** is not made available before the **auction** the following provisions apply:

(a) The **buyer** may raise no requisition on or objection to any of the documents that is made available before the **auction**.

(b) If the **lot** is registered land the **seller** is to give to the **buyer** within five **business days** of the **contract date** an official copy of the entries on the register and title plan and, where noted on the register, of all documents subject to which the **lot** is being sold.

(c) If the **lot** is not registered land the **seller** is to give to the **buyer** within five **business days** an abstract or epitome of title starting from the root of title mentioned in the **special conditions** (or, if none is mentioned, a good root of title more than fifteen years old) and must produce to the **buyer** the original or an examined copy of every relevant **document**.

(d) If title is in the course of registration, title is to consist of certified copies of:

(i) the application for registration of title made to the land registry;

(ii) the **documents** accompanying that application;

(iii) evidence that all applicable stamp duty land tax relating to that application has been paid; and

(iv) a letter under which the **seller** or its conveyancer agrees to use all reasonable endeavours to answer any requisitions raised by the land registry and to instruct the land registry to send the completed registration documents to the **buyer**.

(e) The **buyer** has no right to object to or make requisitions on any title information more than seven **business days** after that information has been given to the **buyer**.

- G4.3 Unless otherwise stated in the **special conditions** the **seller** sells with full title guarantee except that (and the **transfer** shall so provide):
- (a) the covenant set out in section 3 of the Law of Property (Miscellaneous Provisions) Act 1994 shall not extend to matters recorded in registers open to public inspection; these are to be treated as within the actual knowledge of the **buyer**; and
- (b) the covenant set out in section 4 of the Law of Property (Miscellaneous Provisions) Act 1994 shall not extend to any condition or tenant's obligation relating to the state or condition of the **lot** where the **lot** is leasehold property.
- G4.4 The **transfer** is to have effect as if expressly subject to all matters subject to which the **lot** is sold under the **contract**.
- G4.5 The **seller** does not have to produce, nor may the **buyer** object to or make a requisition in relation to, any prior or superior title even if it is referred to in the **documents**.
- G4.6 The **seller** (and, if relevant, the **buyer**) must produce to each other such confirmation of, or evidence of, their identity and that of their mortgagees and attorneys (if any) as is necessary for the other to be able to comply with applicable Land Registry Rules when making application for registration of the transaction to which the **conditions** apply.
- G5 Transfer**
- G5.1 Unless a form of **transfer** is prescribed by the **special conditions**:
- (a) the **buyer** must supply a draft **transfer** to the **seller** at least ten **business days** before the **agreed completion date** and the engrossment (signed as a deed by the **buyer** if **condition** G5.2 applies) five **business days** before that date or (if later) two **business days** after the draft has been approved by the **seller**; and
- (b) the **seller** must approve or revise the draft **transfer** within five **business days** of receiving it from the **buyer**.
- G5.2 If the **seller** remains liable in any respect in relation to the **lot** (or a tenancy) following completion the **buyer** is specifically to covenant in the transfer to indemnify the seller against that liability.
- G5.3 The **seller** cannot be required to **transfer** the **lot** to anyone other than the **buyer**, or by more than one **transfer**.
- G5.4 Where the **special conditions** state that the **seller** is to grant a new lease to the **buyer**
- (a) the **conditions** are to be read so that the **transfer** refers to the new lease, the **seller** to the proposed landlord and the **buyer** to the proposed tenant;
- (b) the form of new lease is that described by the **special conditions**; and
- (c) the **seller** is to produce, at least five **business days** before the **agreed completion date**, the engrossed counterpart lease, which the **buyer** is to sign and deliver to the **seller** on **completion**.
- G6 Completion**
- G6.1 **Completion** is to take place at the offices of the **seller's** conveyancer, or where the **seller** may reasonably require, on the **agreed completion date**. The **seller** can only be required to complete on a **business day** and between the hours of 0930 and 1700.
- G6.2 The amount payable on **completion** is the balance of the **price** adjusted to take account of apportionments plus (if applicable) **VAT** and interest.
- G6.3 Payment is to be made in pounds sterling and only by: (a) direct transfer to the **seller's** conveyancer's client account; and
- (b) the release of any deposit held by a stakeholder.
- G6.4 Unless the **seller** and the **buyer** otherwise agree, **completion** cannot take place until both have complied with their obligations under the **contract** and the balance of the **price** is unconditionally received in the **seller's** conveyancer's client account.
- G6.5 If **completion** takes place after 1400 hours for a reason other than the **seller's** default it is to be treated, for the purposes of apportionment and calculating interest, as if it had taken place on the next **business day**.
- G6.6 Where applicable the **contract** remains in force following **completion**.
- G7 Notice to complete**
- G7.1 The **seller** or the **buyer** may on or after the **agreed completion date** but before **completion** give the other notice to complete within ten **business days** (excluding the date on which the notice is given) making time of the essence.
- G7.2 The person giving the notice must be **ready to complete**.
- G7.3 If the **buyer** fails to comply with a notice to complete the **seller** may, without affecting any other remedy the **seller** has:
- (a) terminate the **contract**;
- (b) claim the deposit and any interest on it if held by a stakeholder;
- (c) forfeit the deposit and any interest on it;
- (d) resell the **lot**; and
- (e) claim damages from the **buyer**.
- G7.4 If the **seller** fails to comply with a notice to complete the **buyer** may, without affecting any other remedy the **buyer** has:
- (a) terminate the **contract**; and
- (b) recover the deposit and any interest on it from the **seller** or, if applicable, a stakeholder.
- G8 If the contract is brought to an end**
- If the **contract** is lawfully brought to an end:
- (a) the **buyer** must return all papers to the **seller** and appoints the **seller** its agent to cancel any registration of the **contract**; and
- (b) the **seller** must return the deposit and any interest on it to the **buyer** (and the **buyer** may claim it from the stakeholder, if applicable) unless the **seller** is entitled to forfeit the deposit under **condition** G7.3.
- G9 Landlord's licence**
- G9.1 Where the **lot** is or includes leasehold land and licence to assign is required this **condition** G9 applies.
- G9.2 The **contract** is conditional on that licence being obtained, by way of formal licence if that is what the landlord lawfully requires.
- G9.3 The **agreed completion date** is not to be earlier than the date five **business days** after the **seller** has given notice to the **buyer** that licence has been obtained. G9.4 The **seller** must:
- (a) use all reasonable endeavours to obtain the licence at the **seller's** expense; and
- (b) enter into any authorised guarantee agreement properly required.
- G9.5 The **buyer** must:
- (a) promptly provide references and other relevant information; and
- (b) comply with the landlord's lawful requirements.
- G9.6 If within three months of the **contract date** (or such longer period as the **seller** and **buyer** agree) the licence has not been obtained the **seller** or the **buyer** may (if not then in breach of any obligation under this **condition** G9) by notice to the other terminate the **contract** at any time before licence is obtained. That termination is without prejudice to the claims of either **seller** or **buyer** for breach of this **condition** G9.
- G10 Interest and apportionments**
- G10.1 If the **actual completion date** is after the **agreed completion date** for any reason other than the **seller's** default the **buyer** must pay interest at the **interest rate** on the **price** (less any deposit paid) from the **agreed completion date** up to and including the **actual completion date**.
- G10.2 Subject to **condition** G11 the **seller** is not obliged to apportion or account for any sum at **completion** unless the **seller** has received that sum in cleared funds. The **seller** must pay to the **buyer** after **completion** any sum to which the **buyer** is entitled that the **seller** subsequently receives in cleared funds.
- G10.3 Income and outgoings are to be apportioned at actual **completion date** unless:
- (a) the **buyer** is liable to pay interest; and
- (b) the **seller** has given notice to the **buyer** at any time up to **completion** requiring apportionment on the date from which interest becomes payable by the **buyer**; in which event income and outgoings are to be apportioned on the date from which interest becomes payable by the **buyer**.
- G10.4 Apportionments are to be calculated on the basis that:
- (a) the **seller** receives income and is liable for outgoings for



- the whole of the day on which apportionment is to be made; (b) annual income and expenditure accrues at an equal daily rate assuming 365 days in a year, and income and expenditure relating to some other period accrues at an equal daily rate during the period to which it relates; and (c) where the amount to be apportioned is not known at **completion** apportionment is to be made by reference to a reasonable estimate and further payment is to be made by **seller** or **buyer** as appropriate within five **business days** of the date when the amount is known.
- G10.5 if a payment due from the **buyer** to the **seller** on or after **completion** is not paid by the due date, the **buyer** is to pay interest to the **seller** at the **interest rate** on that payment from the due date up to and including the date of payment.
- G11 Arrears**  
**Part 1 Current rent**  
G11.1 "Current rent" means, in respect of each of the **tenancies** subject to which the lot is sold, the instalment of rent and other sums payable by the tenant in advance on the most recent rent payment date on or within four months preceding **completion**.  
G11.2 If on **completion** there are any **arrears** of current rent the **buyer** must pay them, whether or not details of those **arrears** are given in the **special conditions**.  
G11.3 Parts 2 and 3 of this **condition** G11 do not apply to **arrears** of current rent.
- Part 2 Buyer to pay for arrears**  
G11.4 Part 2 of this **condition** G11 applies where the **special conditions** give details of **arrears**.  
G11.5 The **buyer** is on **completion** to pay, in addition to any other money then due, an amount equal to all **arrears** of which details are set out in the **special conditions**. G11.6 If those **arrears** are not **old arrears** the **seller** is to assign to the **buyer** all rights that the **seller** has to recover those **arrears**.
- Part 3 Buyer not to pay for arrears**  
G11.7 Part 3 of this **condition** G11 applies where the **special conditions**:  
(a) so state; or  
(b) give no details of any **arrears**.  
G11.8 While any **arrears** due to the **seller** remain unpaid the **buyer** must:  
(a) try to collect them in the ordinary course of management but need not take legal proceedings or forfeit the **tenancy**;  
(b) pay them to the **seller** within five **business days** of receipt in cleared funds (plus interest at the **interest rate** calculated on a daily basis for each subsequent day's delay in payment);  
(c) on request, at the cost of the **seller**, assign to the **seller** or as the **seller** may direct the right to demand and sue for **old arrears**, such assignment to be in such form as the **seller's** conveyancer may reasonably require;  
(d) if reasonably required, allow the **seller's** conveyancer to have on loan the counterpart of any **tenancy** against an undertaking to hold it to the **buyer's** order;  
(e) not without the consent of the **seller** release any tenant or surety from liability to pay **arrears** or accept a surrender of or forfeit any **tenancy** under which **arrears** are due; and  
(f) if the **buyer** disposes of the **lot** prior to recovery of all **arrears** obtain from the **buyer's** successor in title a covenant in favour of the **seller** in similar form to part 3 of this **condition** G11.  
G11.9 Where the **seller** has the right to recover **arrears** it must not without the **buyer's** written consent bring insolvency proceedings against a tenant or seek the removal of goods from the **lot**.
- G12 Management**  
G12.1 This **condition** G12 applies where the **lot** is sold subject to **tenancies**.  
G12.2 The **seller** is to manage the **lot** in accordance with its standard management policies pending **completion**.  
G12.3 The **seller** must consult the **buyer** on all management issues that would affect the **buyer** after **completion** (such as, but not limited to, an application for licence; a rent review; a variation, surrender, agreement to surrender or proposed forfeiture of a **tenancy**; or a new **tenancy** or agreement to grant a new **tenancy**) and:  
(a) the **seller** must comply with the **buyer's** reasonable requirements unless to do so would (but for the indemnity in paragraph (c)) expose the **seller** to a liability that the **seller** would not otherwise have, in which case the **seller** may act reasonably in such a way as to avoid that liability;  
(b) if the **seller** gives the **buyer** notice of the **seller's** intended act and the **buyer** does not object within five **business days** giving reasons for the objection the **seller** may act as the **seller** intends; and  
(c) the **buyer** is to indemnify the **seller** against all loss or liability the **seller** incurs through acting as the **buyer** requires, or by reason of delay caused by the **buyer**.
- G13 Rent deposits**  
**Where any TENANCY is an assured shorthold TENANCY, the SELLER and the BUYER are to comply with their respective statutory duties in relation to the protection of tenants' deposits, and to demonstrate in writing to the other (before COMPLETION, so far as practicable) that they have complied**  
G13.1 This **condition** G13 applies where the **seller** is holding or otherwise entitled to money by way of rent deposit in respect of a **tenancy**. In this **condition** G13 "rent deposit deed" means the deed or other document under which the rent deposit is held.  
G13.2 If the rent deposit is not assignable the **seller** must on **completion** hold the rent deposit on trust for the **buyer** and, subject to the terms of the rent deposit deed, comply at the cost of the **buyer** with the **buyer's** lawful instructions.  
G13.3 Otherwise the **seller** must on **completion** pay and assign its interest in the rent deposit to the **buyer** under an assignment in which the buyer covenants with the **seller** to:  
(a) observe and perform the **seller's** covenants and conditions in the rent deposit deed and indemnify the **seller** in respect of any breach;  
(b) give notice of assignment to the tenant; and  
(c) give such direct covenant to the tenant as may be required by the rent deposit deed.
- G14 VAT**  
G14.1 Where a **sale condition** requires money to be paid or other consideration to be given, the payer must also pay any **VAT** that is chargeable on that money or consideration, but only if given a valid **VAT** invoice.  
G14.2 Where the **special conditions** state that no **VAT option** has been made the **seller** confirms that none has been made by it or by any company in the same **VAT** group nor will be prior to **completion**.
- G15 Transfer as a going concern**  
G15.1 Where the **special conditions** so state:  
(a) the **seller** and the **buyer** intend, and will take all practicable steps (short of an appeal) to procure, that the sale is treated as a transfer of a going concern; and (b) this **condition** G15 applies.  
G15.2 The **seller** confirms that the **seller**  
(a) is registered for **VAT**, either in the **seller's** name or as a member of the same **VAT** group; and  
(b) has (unless the sale is a standard-rated supply) made in relation to the **lot** a **VAT option** that remains valid and will not be revoked before **completion**.  
G15.3 The **buyer** confirms that:  
(a) it is registered for **VAT**, either in the **buyer's** name or as a member of a **VAT** group;  
(b) it has made, or will make before **completion**, a **VAT option** in relation to the **lot** and will not revoke it before or within three months after **completion**;  
(c) article 5(2B) of the Value Added Tax (Special Provisions) Order 1995 does not apply to it; and  
(d) it is not buying the **lot** as a nominee for another person.  
G15.4 The **buyer** is to give to the **seller** as early as possible before the **agreed completion date** evidence:  
(a) of the **buyer's** **VAT** registration;  
(b) that the **buyer** has made a **VAT option**; and  
(c) that the **VAT option** has been notified in writing to HM Revenue and Customs; and if it does not produce the relevant evidence at least two **business days** before the **agreed completion date**, **condition** G14.1 applies at **completion**.  
G15.5 The **buyer** confirms that after **completion** the **buyer** intends to:

- (a) retain and manage the **lot** for the **buyer's** own benefit as a continuing business as a going concern subject to and with the benefit of the **tenancies**; and (b) collect the rents payable under the **tenancies** and charge **VAT** on them
- G15.6 If, after **completion**, it is found that the sale of the **lot** is not a transfer of a going concern then:
- (a) the **seller's** conveyancer is to notify the **buyer's** conveyancer of that finding and provide a **VAT** invoice in respect of the sale of the **lot**;
- (b) the **buyer** must within five **business days** of receipt of the **VAT** invoice pay to the **seller** the **VAT** due; and (c) if **VAT** is payable because the **buyer** has not complied with this **condition** G15, the buyer must pay and indemnify the **seller** against all costs, interest, penalties or surcharges that the **seller** incurs as a result.
- G16 Capital allowances**
- G16.1 This **condition** G16 applies where the **special conditions** state that there are capital allowances available in respect of the **lot**.
- G16.2 The **seller** is promptly to supply to the **buyer** all information reasonably required by the **buyer** in connection with the **buyer's** claim for capital allowances.
- G16.3 The value to be attributed to those items on which capital allowances may be claimed is set out in the **special conditions**.
- G16.4 The **seller** and **buyer** agree:
- (a) to make an election on **completion** under Section 198 of the Capital Allowances Act 2001 to give effect to this **condition** G16; and
- (b) to submit the value specified in the **special conditions** to HM Revenue and Customs for the purposes of their respective capital allowance computations.
- G17 Maintenance agreements**
- G17.1 The **seller** agrees to use reasonable endeavours to transfer to the **buyer**, at the **buyer's** cost, the benefit of the maintenance agreements specified in the **special conditions**.
- G17.2 The **buyer** must assume, and indemnify the **seller** in respect of, all liability under such contracts from the **actual completion date**.
- G18 Landlord and Tenant Act 1987**
- G18.1 This **condition** G18 applies where the sale is a relevant disposal for the purposes of part I of the Landlord and Tenant Act 1987.
- G18.2 The **seller** warrants that the **seller** has complied with sections 5B and 7 of that Act and that the requisite majority of qualifying tenants has not accepted the offer.
- G19 Sale by practitioner**
- G19.1 This **condition** G19 applies where the sale is by a **practitioner** either as **seller** or as agent of the **seller**.
- G19.2 The **practitioner** has been duly appointed and is empowered to sell the **lot**.
- G19.3 Neither the **practitioner** nor the firm or any member of the firm to which the **practitioner** belongs has any personal liability in connection with the sale or the performance of the **seller's** obligations. The **transfer** is to include a declaration excluding that personal liability.
- G19.4 The **lot** is sold:
- (a) in its condition at **completion**;
- (b) for such title as the **seller** may have; and
- (c) with no title guarantee;
- and the **buyer** has no right to terminate the contract or any other remedy if information provided about the **lot** is inaccurate, incomplete or missing.
- G19.5 Where relevant:
- (a) the **documents** must include certified copies of those under which the **practitioner** is appointed, the document of appointment and the **practitioner's** acceptance of appointment; and
- (b) the **seller** may require the **transfer** to be by the lender exercising its power of sale under the Law of Property Act 1925.
- G19.6 The **buyer** understands this **condition** G19 and agrees that it is fair in the circumstances of a sale by a **practitioner**.
- G20 TUPE**
- G20.1 If the **special conditions** state "There are no employees to which **TUPE** applies", this is a warranty by the **seller** to this effect.
- G20.2 If the **special conditions** do not state "There are no employees to which **TUPE** applies" the following paragraphs apply:
- (a) The **seller** must notify the **buyer** of those employees whose contracts of employment will transfer to the **buyer** on **completion** (the "Transferring Employees"). This notification must be given to the **buyer** not less than 14 days before **completion**.
- (b) The **buyer** confirms that it will comply with its obligations under **TUPE** and any **special conditions** in respect of the Transferring Employees.
- (c) The **buyer** and the **seller** acknowledge that pursuant and subject to **TUPE**, the contracts of employment between the Transferring Employees and the **seller** will transfer to the **buyer** on **completion**.
- (d) The **buyer** is to keep the **seller** indemnified against all liability for the Transferring Employees after **completion**.
- G21 Environmental**
- G21.1 This **condition** G21 only applies where the **special conditions** so provide.
- G21.2 The **seller** has made available such reports as the **seller** has as to the environmental condition of the lot and has given the **buyer** the opportunity to carry out investigations (whether or not the **buyer** has read those reports or carried out any investigation) and the **buyer** admits that the **price** takes into account the environmental condition of the **lot**.
- G21.3 The **buyer** agrees to indemnify the **seller** in respect of all liability for or resulting from the environmental condition of the **lot**.
- G22 Service Charge**
- G22.1 This **condition** G22 applies where the lot is sold subject to **tenancies** that include service charge provisions.
- G22.2 No apportionment is to be made at **completion** in respect of service charges.
- G22.3 Within two months after **completion** the **seller** must provide to the **buyer** a detailed service charge account for the service charge year current on **completion** showing:
- (a) service charge expenditure attributable to each **tenancy**;
- (b) payments on account of service charge received from each tenant;
- (c) any amounts due from a tenant that have not been received;
- (d) any service charge expenditure that is not attributable to any **tenancy** and is for that reason irrecoverable.
- G22.4 In respect of each **tenancy**, if the service charge account shows that:
- (a) payments on account (whether received or still then due from a tenant) exceed attributable service charge expenditure, the **seller** must pay to the **buyer** an amount equal to the excess when it provides the service charge account;
- (b) attributable service charge expenditure exceeds payments on account (whether those payments have been received or are still then due), the **buyer** must use all reasonable endeavours to recover the shortfall from the tenant at the next service charge reconciliation date and pay the amount so recovered to the **seller** within five **business days** of receipt in cleared funds; but in respect of payments on account that are still due from a tenant **condition** G11 (**arrear**s) applies.
- G22.5 In respect of service charge expenditure that is not attributable to any **tenancy** the **seller** must pay the expenditure incurred in respect of the period before **actual completion date** and the **buyer** must pay the expenditure incurred in respect of the period after **actual completion date**. Any necessary monetary adjustment is to be made within five **business days** of the **seller** providing the service charge account to the **buyer**.
- G22.6 If the **seller** holds any reserve or sinking fund on account of future service charge expenditure or a depreciation fund:
- (a) the **seller** must pay it (including any interest earned on it) to the **buyer** on **completion**; and
- (b) the **buyer** must covenant with the **seller** to hold it in accordance with the terms of the **tenancies** and to indemnify the **seller** if it does not do so.
- G23. Rent reviews**
- G23.1 This **condition** G23 applies where the **lot** is sold subject

- to a **tenancy** under which a rent review due on or before the **actual completion date** has not been agreed or determined.
- G23.2 The **seller** may continue negotiations or rent review proceedings up to the **actual completion date** but may not agree the level of the revised rent or commence rent review proceedings without the written consent of the **buyer**, such consent not to be unreasonably withheld or delayed.
- G23.3 Following **completion** the **buyer** must complete rent review negotiations or proceedings as soon as reasonably practicable but may not agree the level of the revised rent without the written consent of the **seller**, such consent not to be unreasonably withheld or delayed.
- G23.4 The **seller** must promptly:  
 (a) give to the **buyer** full details of all rent review negotiations and proceedings, including copies of all correspondence and other papers; and  
 (b) use all reasonable endeavours to substitute the **buyer** for the **seller** in any rent review proceedings.
- G23.5 The **seller** and the **buyer** are to keep each other informed of the progress of the rent review and have regard to any proposals the other makes in relation to it.
- G23.6 When the rent review has been agreed or determined the **buyer** must account to the **seller** for any increased rent and interest recovered from the tenant that relates to the **seller's** period of ownership within five **business days** of receipt of cleared funds.
- G23.7 If a rent review is agreed or determined before **completion** but the increased rent and any interest recoverable from the tenant has not been received by **completion** the increased rent and any interest recoverable is to be treated as **arrears**.
- G23.8 The **seller** and the **buyer** are to bear their own costs in relation to rent review negotiations and proceedings.
- G24 Tenancy renewals**
- G24.1 This **condition** G24 applies where the tenant under a **tenancy** has the right to remain in occupation under part II of the Landlord and Tenant Act 1954 (as amended) and references to notices and proceedings are to notices and proceedings under that Act.
- G24.2 Where practicable, without exposing the **seller** to liability or penalty, the **seller** must not without the written consent of the **buyer** (which the **buyer** must not unreasonably withhold or delay) serve or respond to any notice or begin or continue any proceedings.
- G24.3 If the **seller** receives a notice the **seller** must send a copy to the **buyer** within five **business days** and act as the **buyer** reasonably directs in relation to it.
- G24.4 Following **completion** the **buyer** must:  
 (a) with the co-operation of the **seller** take immediate steps to substitute itself as a party to any proceedings; (b) use all reasonable endeavours to conclude any proceedings or negotiations for the renewal of the **tenancy** and the determination of any interim rent as soon as reasonably practicable at the best rent or rents reasonably obtainable; and  
 (c) if any increased rent is recovered from the tenant (whether as interim rent or under the renewed **tenancy**) account to the **seller** for the part of that increase that relates to the **seller's** period of ownership of the **lot** within five **business days** of receipt of cleared funds.
- G24.5 The **seller** and the **buyer** are to bear their own costs in relation to the renewal of the tenancy and any proceedings relating to this.
- G25 Warranties**
- G25.1 Available warranties are listed in the **special conditions**.
- G25.2 Where a warranty is assignable the **seller** must:  
 (a) on **completion** assign it to the **buyer** and give notice of assignment to the person who gave the warranty; and  
 (b) apply for (and the **seller** and the **buyer** must use all reasonable endeavours to obtain) any consent to assign that is required. If consent has not been obtained by **completion** the warranty must be assigned within five **business days** after the consent has been obtained.
- G25.3 If a warranty is not assignable the **seller** must after **completion**:  
 (a) hold the warranty on trust for the **buyer**; and (b) at the **buyer's** cost comply with such of the lawful instructions of the **buyer** in relation to the warranty as do not place the **seller** in breach of its terms or expose the **seller** to any liability or penalty.
- G26 No assignment**  
 The **buyer** must not assign, mortgage or otherwise transfer or part with the whole or any part of the **buyer's** interest under this **contract**.
- G27 Registration at the Land Registry**
- G27.1 This condition G27.1 applies where the **lot** is leasehold and its sale either triggers first registration or is a registrable disposition. The **buyer** must at its own expense and as soon as practicable:  
 (a) procure that it becomes registered at Land Registry as proprietor of the **lot**;  
 (b) procure that all rights granted and reserved by the lease under which the **lot** is held are properly noted against the affected titles; and  
 (c) provide the **seller** with an official copy of the register relating to such lease showing itself registered as proprietor.
- G27.2 This condition G27.2 applies where the **lot** comprises part of a registered title.  
 The **buyer** must at its own expense and as soon as practicable:  
 (a) apply for registration of the **transfer**;  
 (b) provide the **seller** with an official copy and title plan for the **buyer's** new title; and  
 (c) join in any representations the **seller** may properly make to Land Registry relating to the application.
- G28 Notices and other communications**
- G28.1 All communications, including notices, must be in writing. Communication to or by the **seller** or the **buyer** may be given to or by their conveyancers.
- G28.2 A communication may be relied on if:  
 (a) delivered by hand; or  
 (b) made electronically and personally acknowledged (automatic acknowledgement does not count); or  
 (c) there is proof that it was sent to the address of the person to whom it is to be given (as specified in the **sale memorandum**) by a postal service that offers normally to deliver mail the next following **business day**.
- G28.3 A communication is to be treated as received:  
 (a) when delivered, if delivered by hand; or  
 (b) when personally acknowledged, if made electronically; but if delivered or made after 1700 hours on a **business day** a communication is to be treated as received on the next **business day**.
- G28.4 A communication sent by a postal service that offers normally to deliver mail the next following **business day** will be treated as received on the second **business day** after it has been posted.
- G29 Contracts (Rights of Third Parties) Act 1999**  
 No one is intended to have any benefit under the **contract** pursuant to the Contract (Rights of Third Parties) Act 1999.
- G30 Extra General Conditions**  
 The following general conditions are to be treated as being amended as follows:  
 G17.2 the word "actual" shall be replaced by the word "agreed"  
 G25.3 (b) the words "or cost" shall be added at the end.

# Property Auctions

☎ 0800 090 2200

✉ [auction@bjbmail.com](mailto:auction@bjbmail.com)

Suite 1, Albion House,  
No.2 Etruria Office Village, Forge Lane,  
Festival Park, Stoke-on-Trent, ST1 5RQ



In association with:

**haart** **Darlows** **HAYBROOK** *Felicity J. Lord*  **CHEWTON ROSE**

**butters**<sup>bjb</sup>  
**john bee**

**Just**  
**Mortgages**

**HOWARDS**

**Valuation**  
Chartered Surveyors

**MustbeSold.COM**

# We are proud to be Carbon neutral

with  tree-nation

In 2021 we started our sustainability journey by committing to measure, report and reduce our carbon footprint with the help of Tree Nation. We set ourselves an ambitious target to not only offset the carbon produced, but to become carbon positive within five years.

## 2020

We measured our carbon footprint and joined Tree-Nation community projects.

## 2021

In 2021 we planted our first trees to offset our 2020 carbon emissions.

## 2022

We continued our planting to offset our 2021 emissions.

## 2023

We project our carbon emissions will start being carbon positive.

We have been supporting Eden Projects with a focus in Nepal with;



**19,482**  
trees planted to  
March 2022



which represents  
**19.5**  
hectares of reforestation.

[buttersjohnbee.com](http://buttersjohnbee.com)

Please recycle this catalogue

